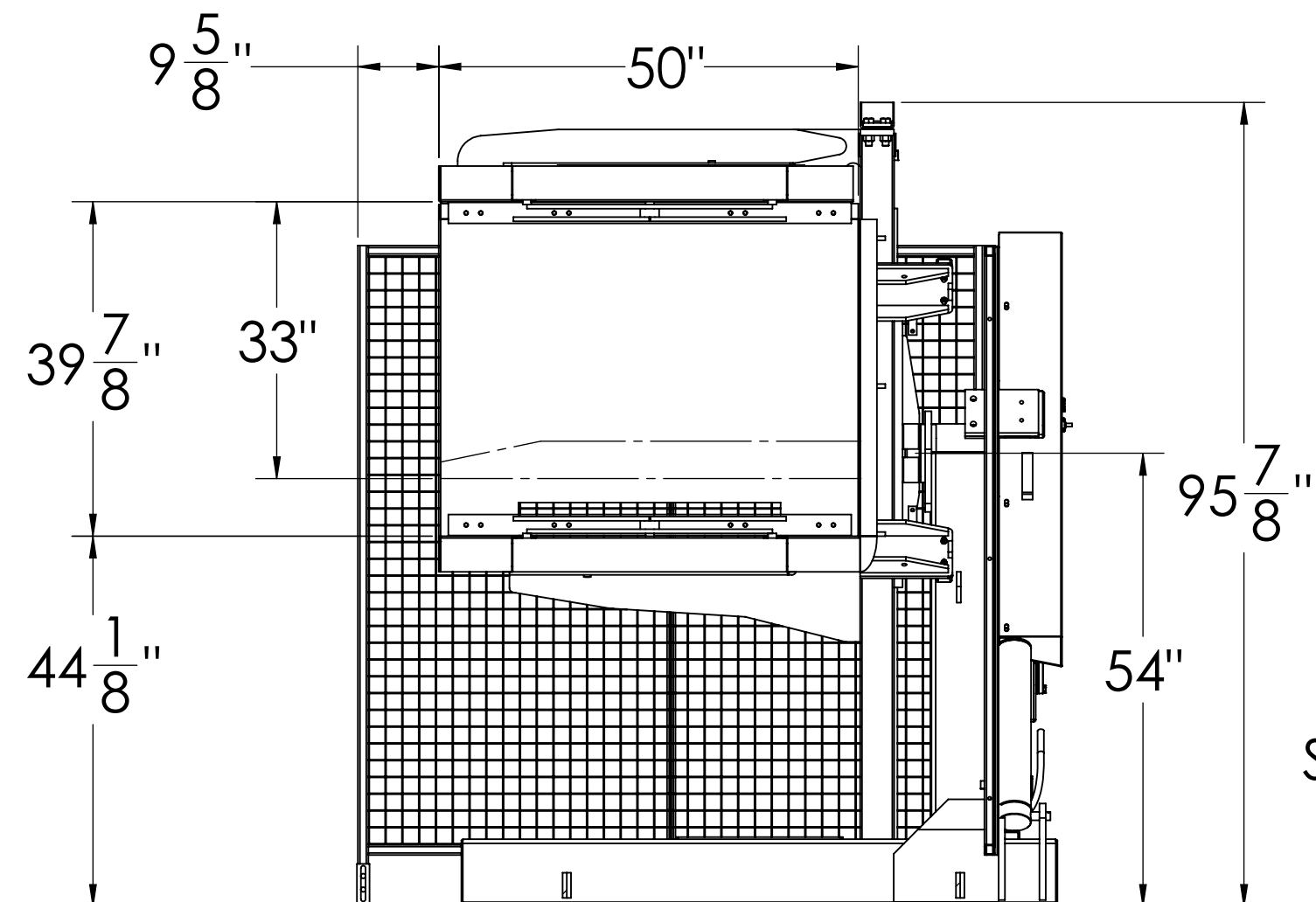
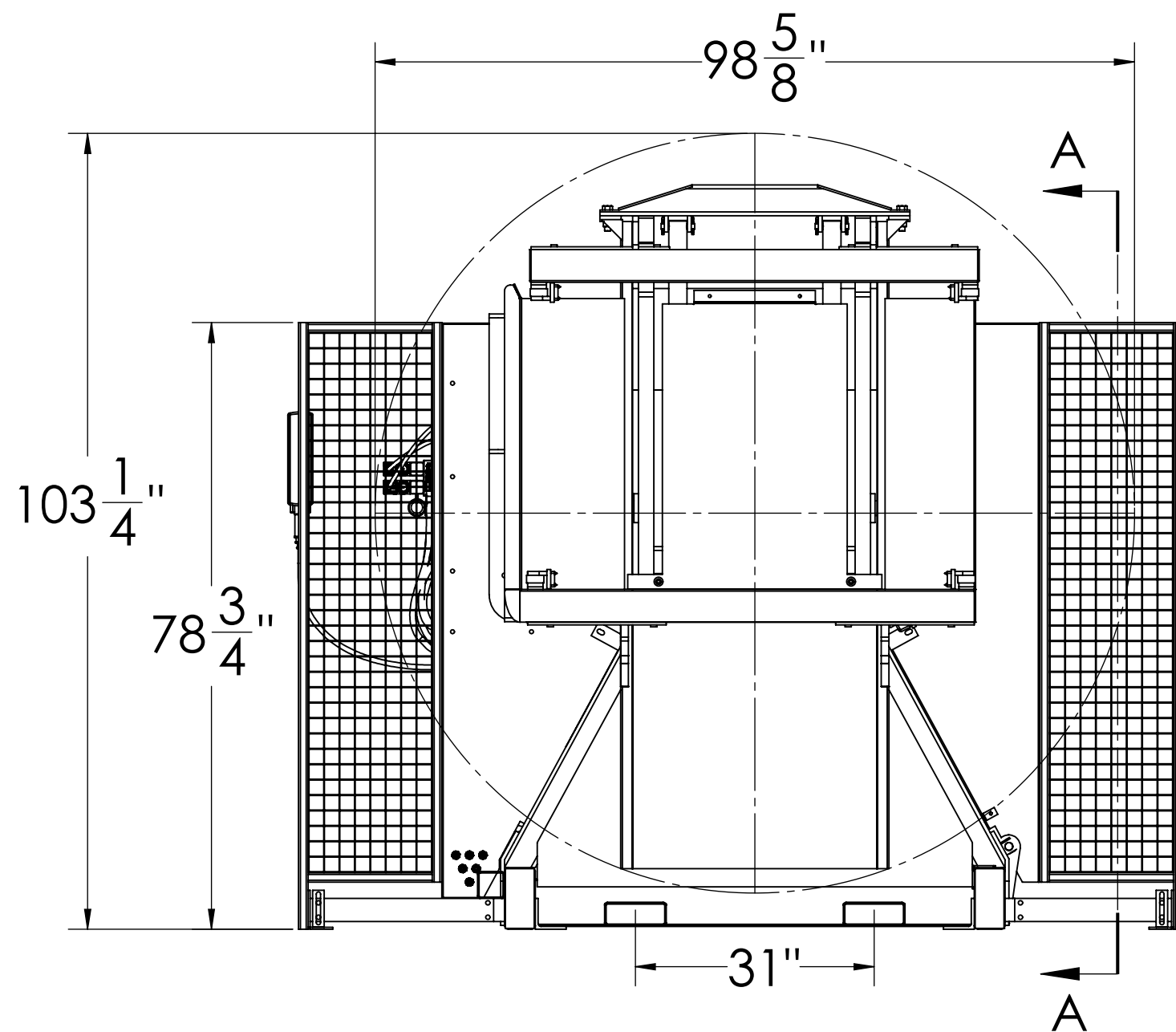
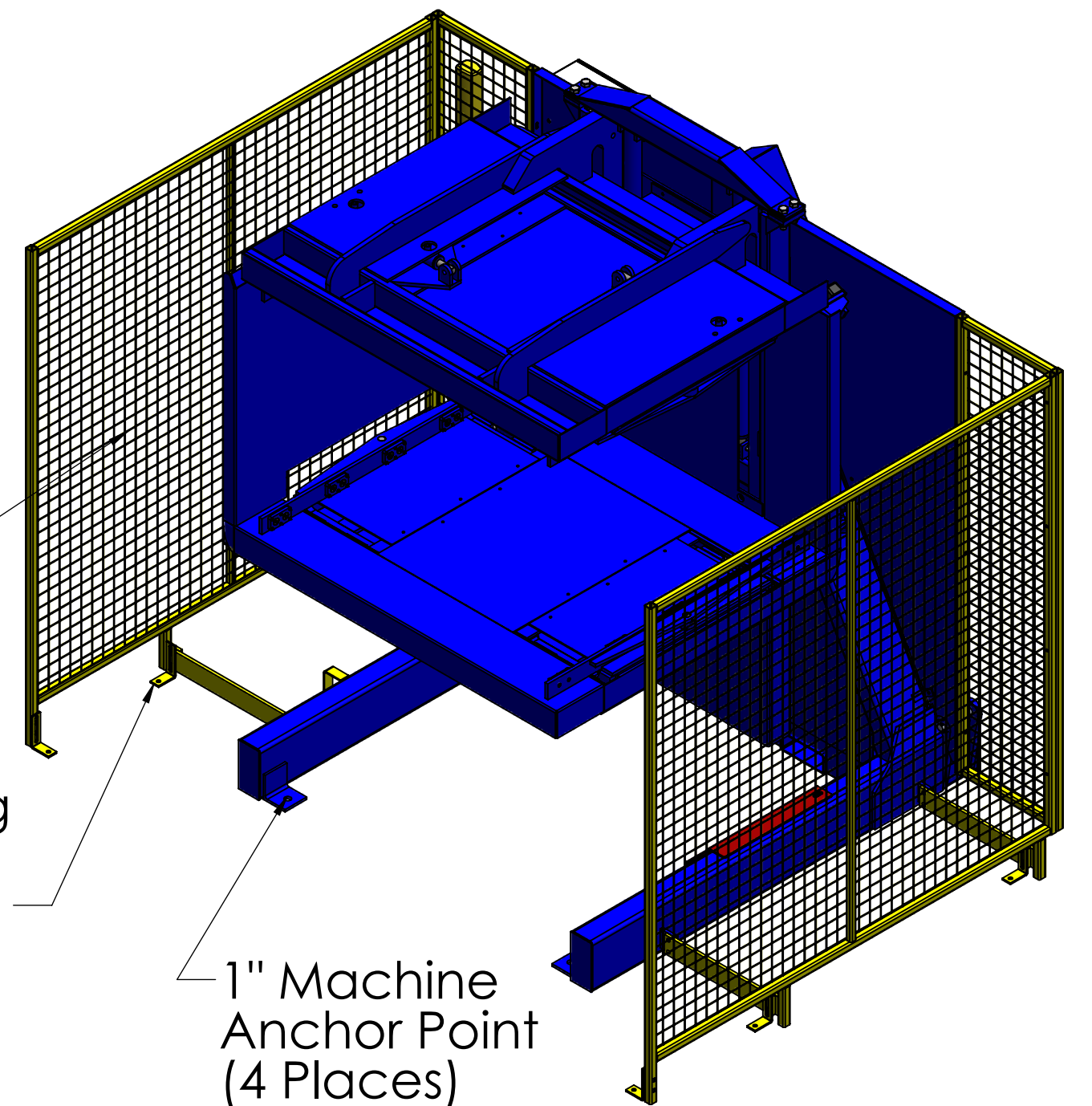


2" x 2" Mesh

5/8" Guarding
Anchor Point
(6 Places)

1" Machine
Anchor Point
(4 Places)



SECTION A-A
SCALE 1 : 20

Approval Print
Cherr's Industrial Equipment

Date Sent: _____

- ☐ APPROVED. PROCEED WITH FABRICATION
- ☐ APPROVED AS NOTED. PROCEED WITH FABRICATION. FURNISH REVISED PRINTS
- ☐ REVISE AS NOTED. RE-SUBMIT FOR APPROVAL. DO NOT FABRICATE.

Tolerances Unless Otherwise Specified

Decimals: 0.X = +/- 0.1
0.XX = +/- 0.01
0.XXX = +/- 0.005

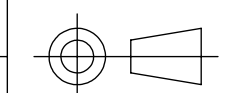
Angle: +/- 1

Fraction: +/- 1/4

This drawing is confidential and is supplied on the express condition that it is not copied or communicated to other persons or companies

Do not scale - If in doubt, ask
Please inform if modifications are made during manufacture

Third Angle Projection



All Units in Inches

X	X/X/XXXX	XXX
#	Date	By
Drawing Revisions		

SC-C40-17P-HSG
Pallet Inverter Assembly



600 Morse Ave.
Elk Grove Village, IL 60007

Date:	1/3/2012
Scale:	1:xx
Drawn By:	RJL
Checked By:	RJL
Material:	Steels
Weight:	3800 lbs. Aprx.
Drawing #:	SC-C40-17P_1