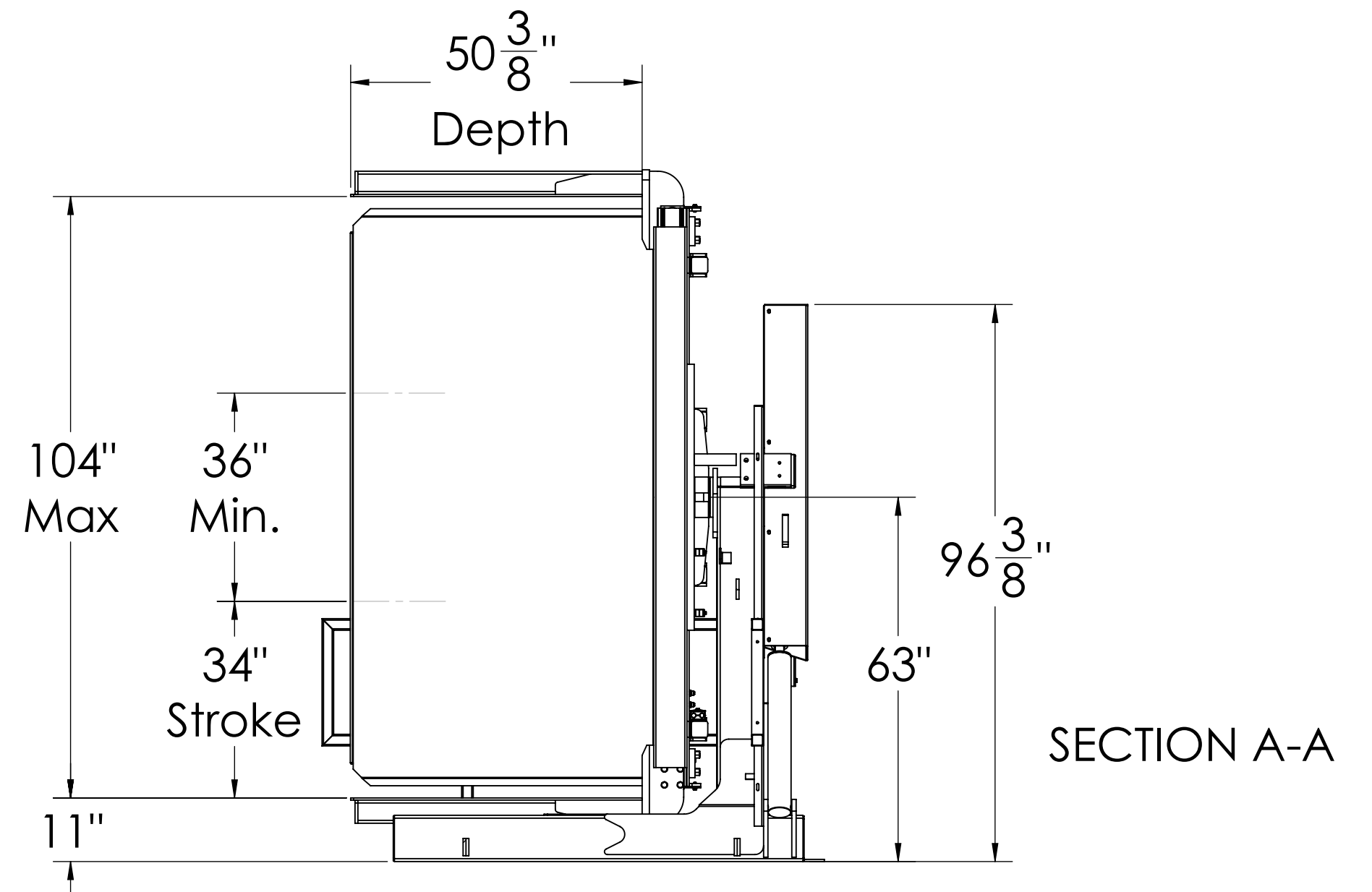
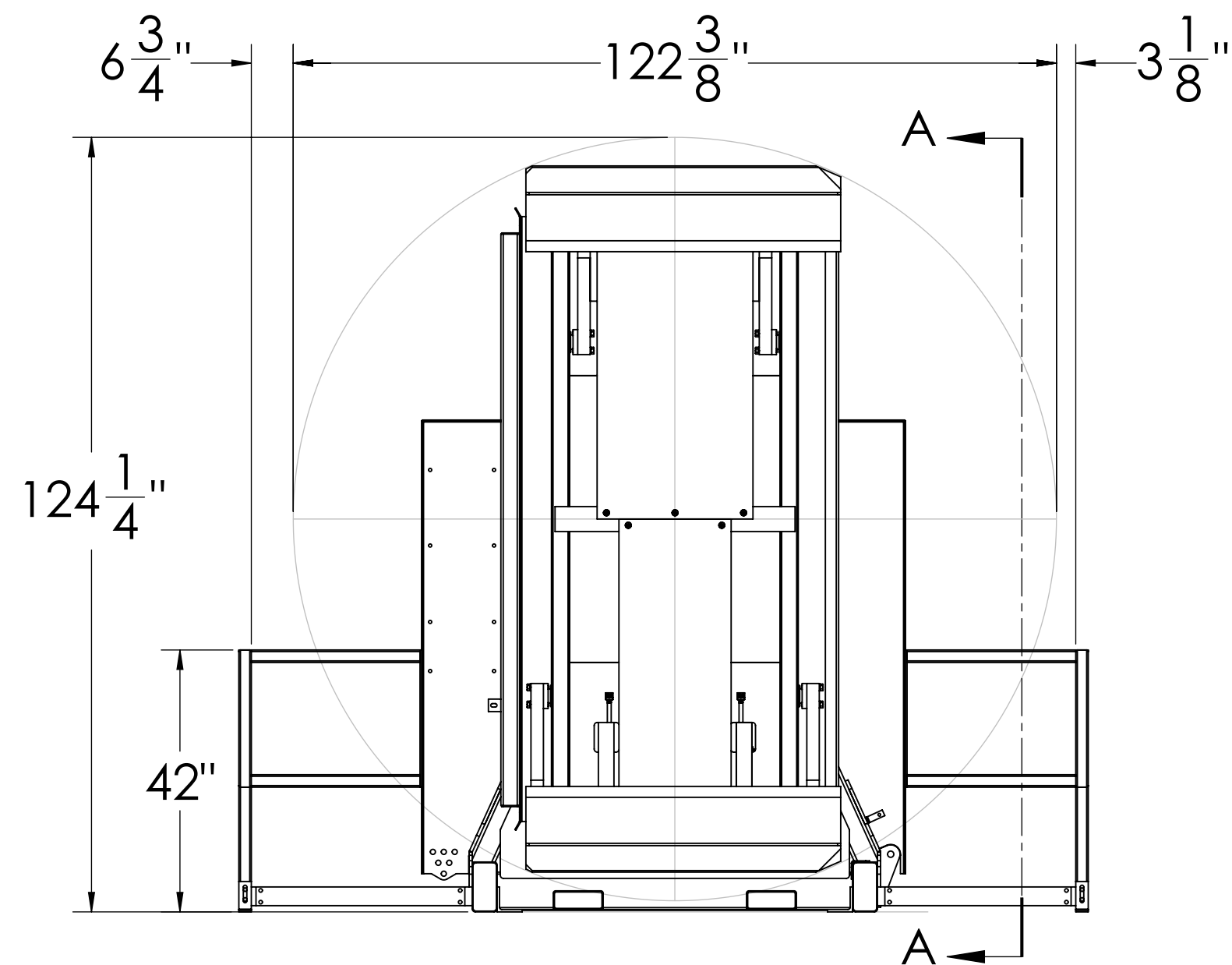
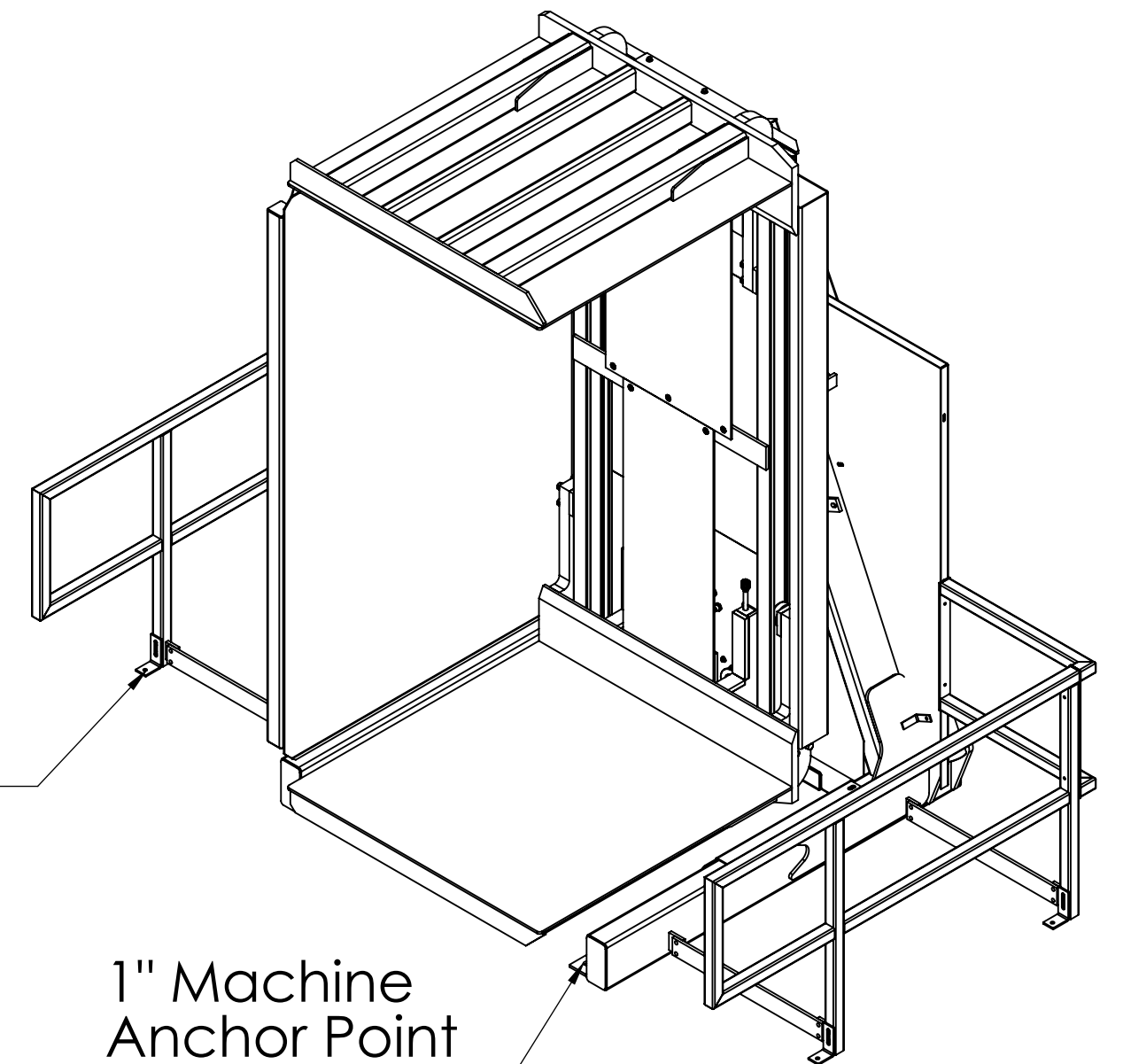


5/8" Guarding
Anchor Point
(4 Places)

1" Machine
Anchor Point
(4 Places)



Approval Print
Cherr's Industrial Equipment

Date Sent: _____

- ☐ APPROVED. PROCEED WITH FABRICATION
- ☐ APPROVED AS NOTED. PROCEED WITH FABRICATION. FURNISH REVISED PRINTS
- ☐ REVISE AS NOTED. RE-SUBMIT FOR APPROVAL. DO NOT FABRICATE.

Tolerances Unless Otherwise Specified

Decimals: 0.X = +/- 0.1
0.XX = +/- 0.01
0.XXX = +/- 0.005

Angle: +/- 1
Fraction: +/- 1/4

This drawing is confidential and is supplied on the express condition that it is not copied or communicated to other persons or companies

Do not scale - If in doubt, ask
Please inform if modifications are made during manufacture

Third Angle Projection



All Units in Inches

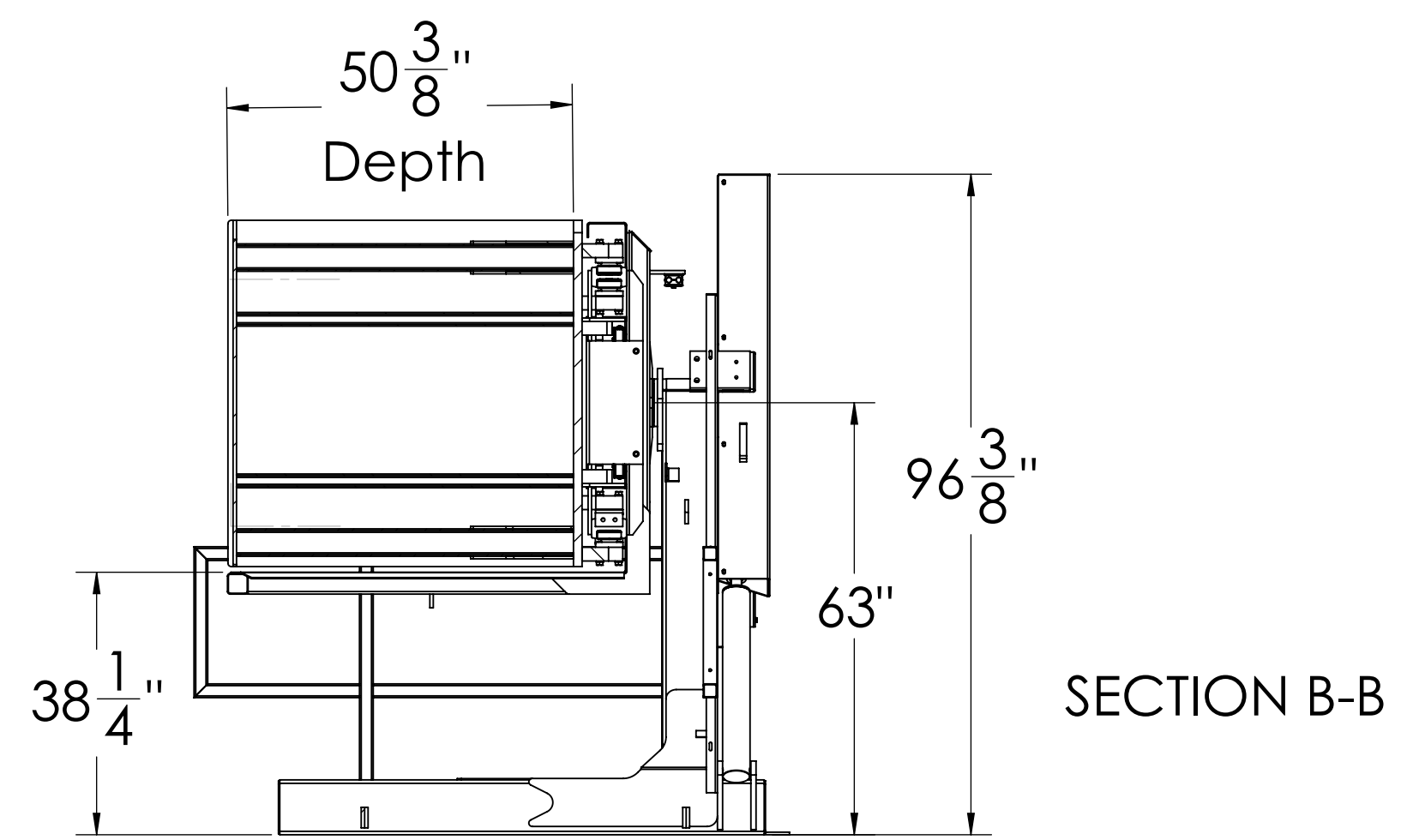
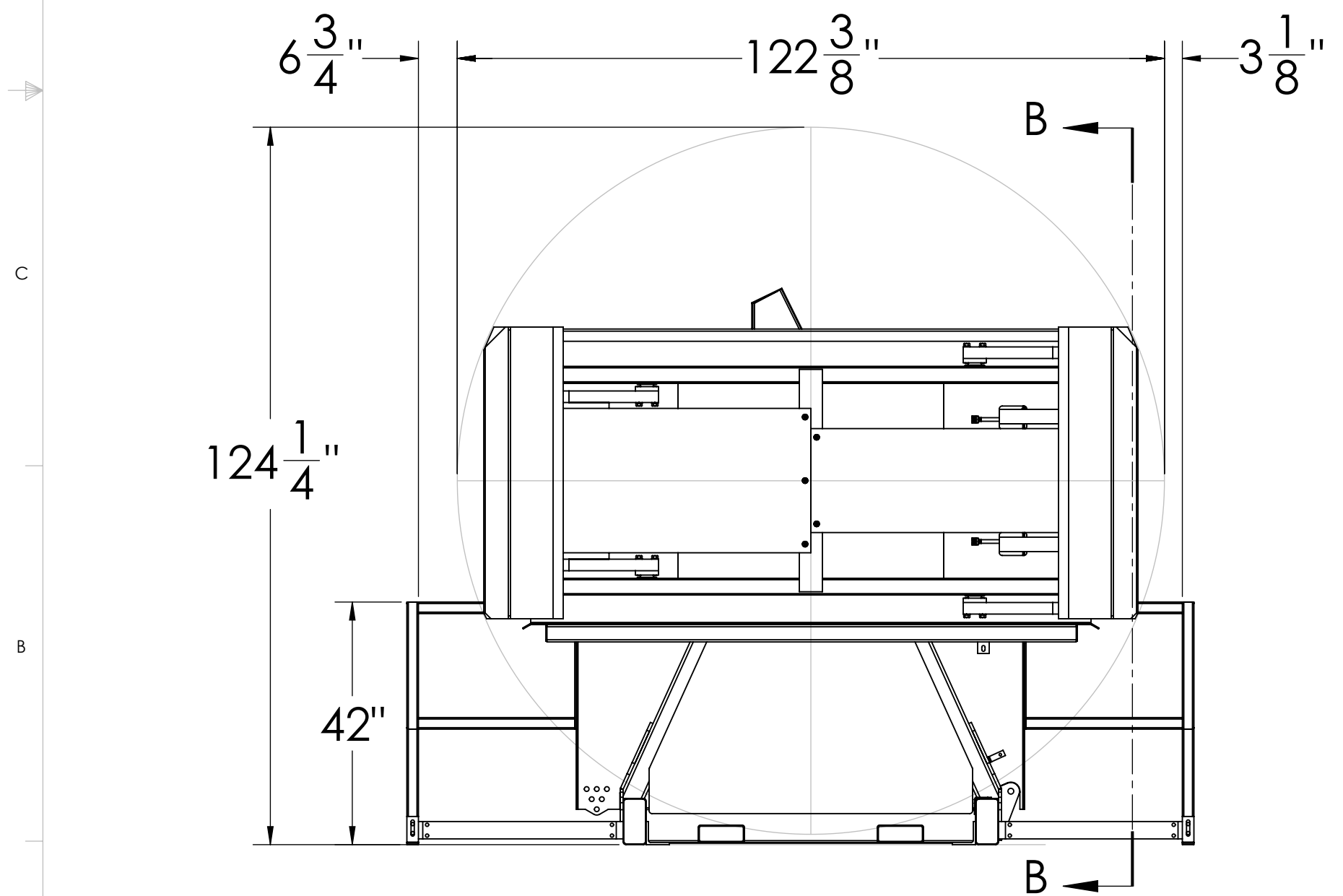
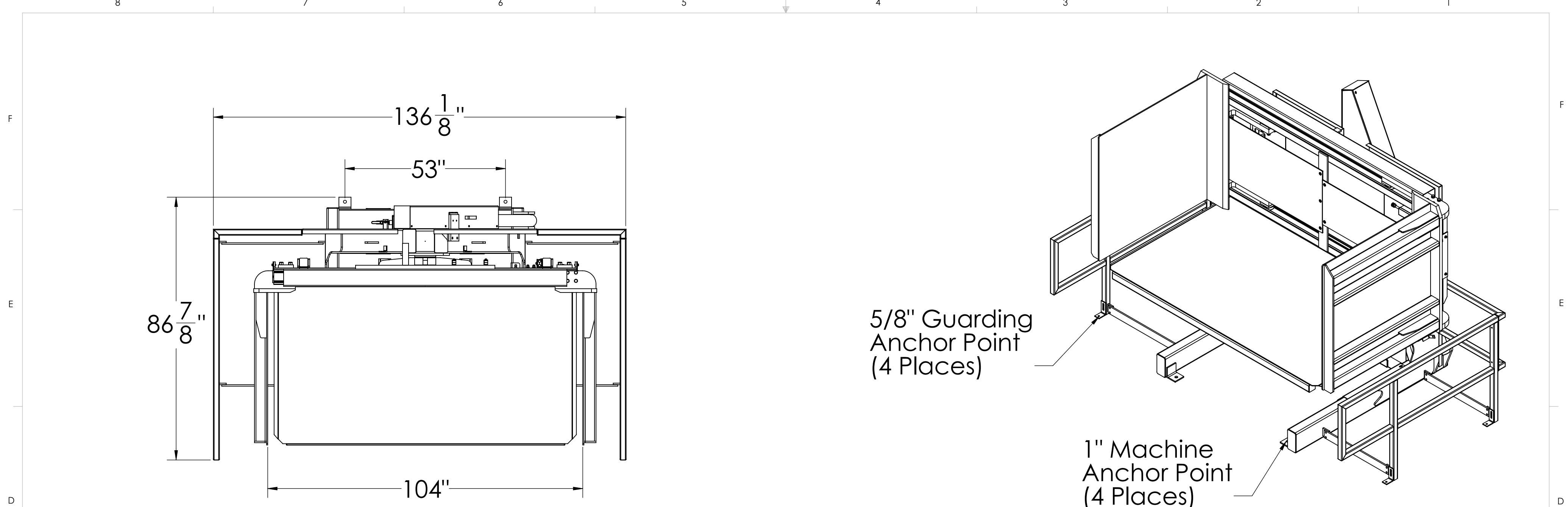
#	Date	By
1	5/29/2014	RJL
Drawing Revisions		

DC-104-GR
Pallet Inverter Assembly



600 Morse Ave.
Elk Grove Village, IL 60007

Date:	8/28/2014
Scale:	1:xx
Drawn By:	RJL
Checked By:	RJL
Material:	Steels
Weight:	5650 lbs. Aprx.
Drawing #:	DC-104-GR



Approval Print
Cherr's Industrial Equipment
Date Sent: _____

<input type="checkbox"/>	APPROVED. PROCEED WITH FABRICATION
<input type="checkbox"/>	APPROVED AS NOTED. PROCEED WITH FABRICATION. FURNISH REVISED PRINTS
<input type="checkbox"/>	REVISE AS NOTED. RE-SUBMIT FOR APPROVAL. DO NOT FABRICATE.

Tolerances Unless Otherwise Specified		DC-104-GR Pallet Inverter Assembly		Date:	8/28/2014
Decimals: 0.X = +/- 0.1 0.XX = +/- 0.01 0.XXX = +/- 0.005				Scale:	1:xx
Angle: +/- 1 Fraction: +/- 1/4				Drawn By:	RJL
This drawing is confidential and is supplied on the express condition that it is not copied or communicated to other persons or companies		Third Angle Projection		Checked By:	RJL
Do not scale - If in doubt, ask Please inform if modifications are made during manufacture				Material:	Steels
		All Units in Inches		Weight:	5650 lbs. Aprx.
		1 5/29/2014 RJL		Drawing #:	DC-104-GR
		# Date By			
		Drawing Revisions			

CHERRY'S
INDUSTRIAL EQUIPMENT
600 Morse Ave.
Elk Grove Village, IL 60007