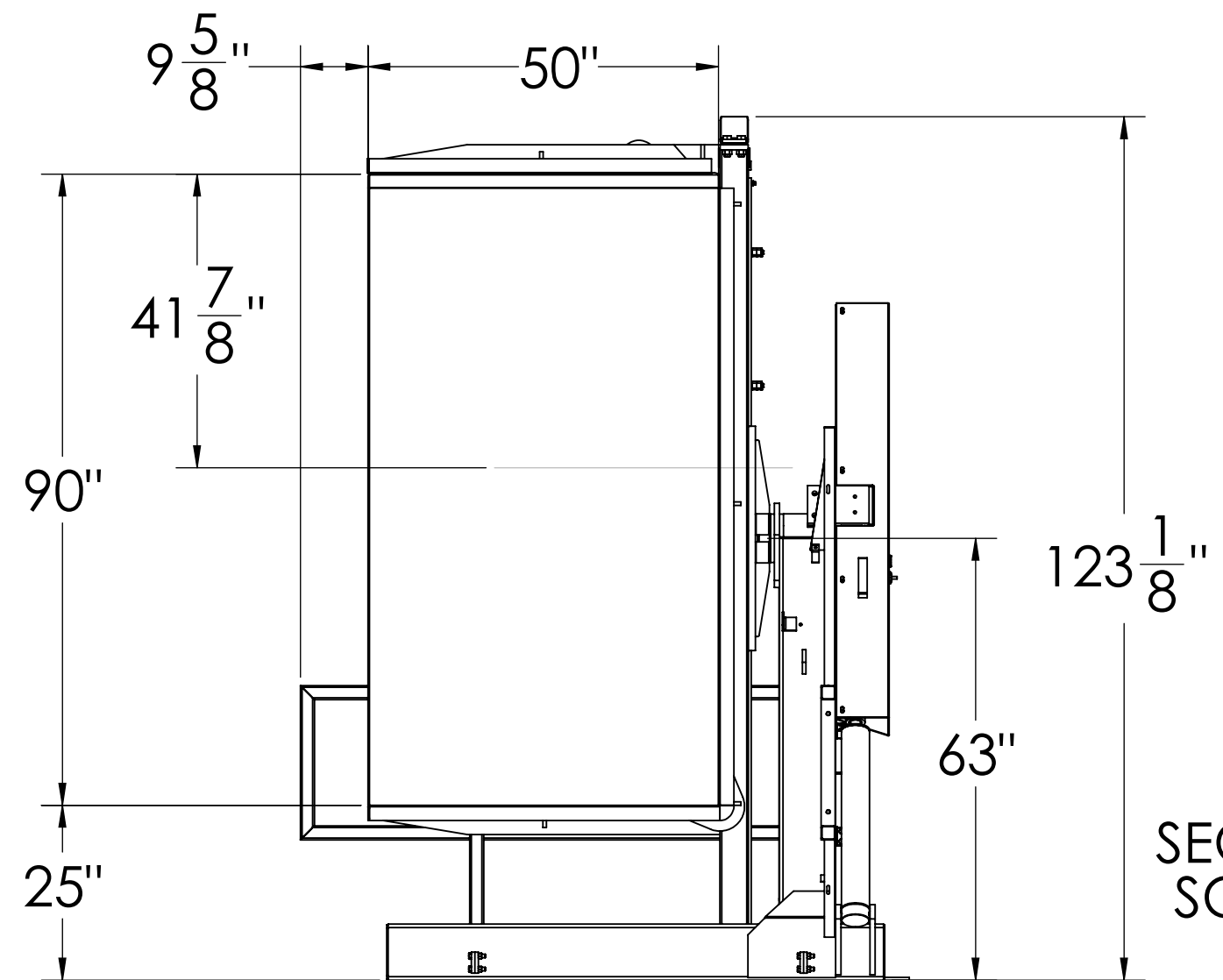
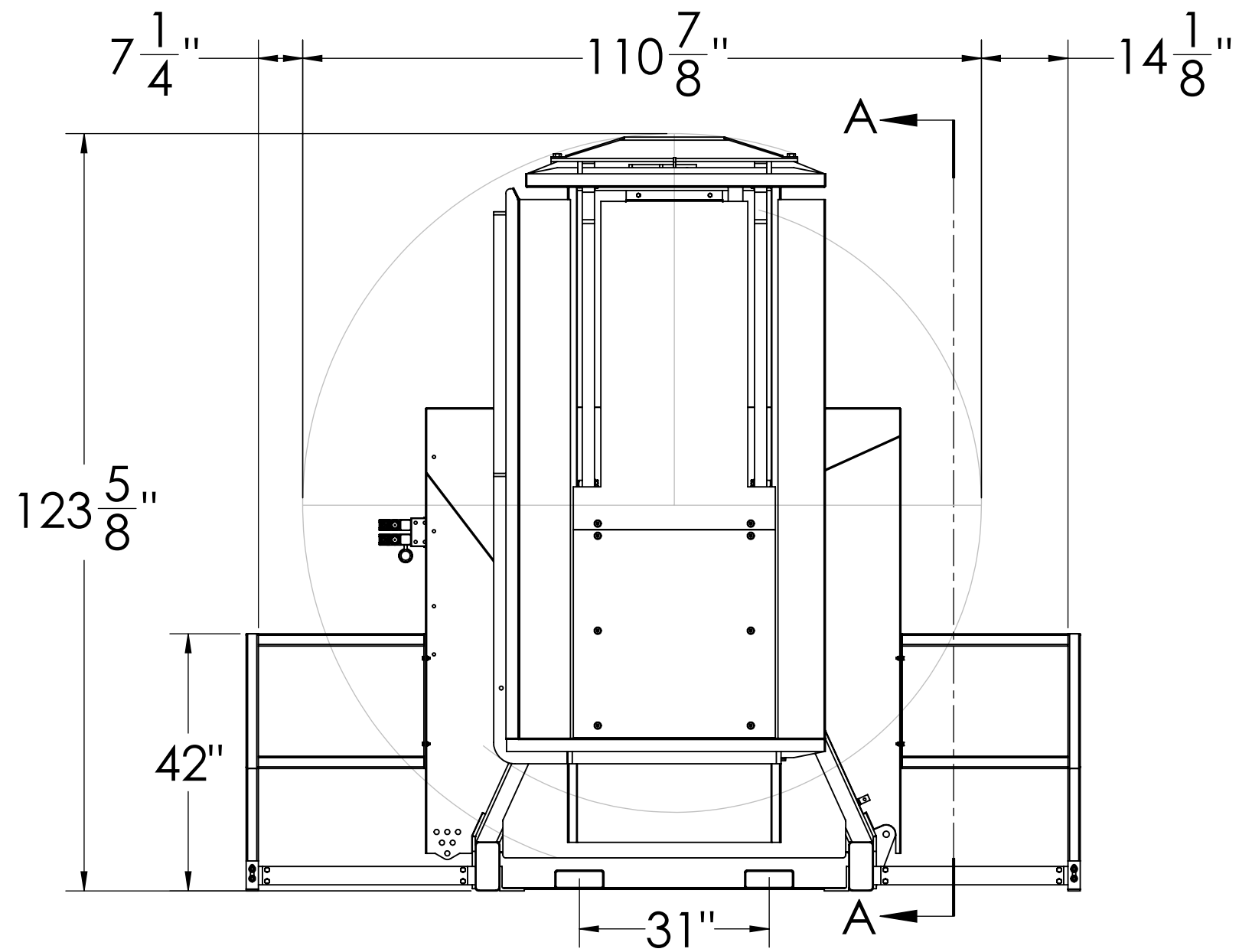
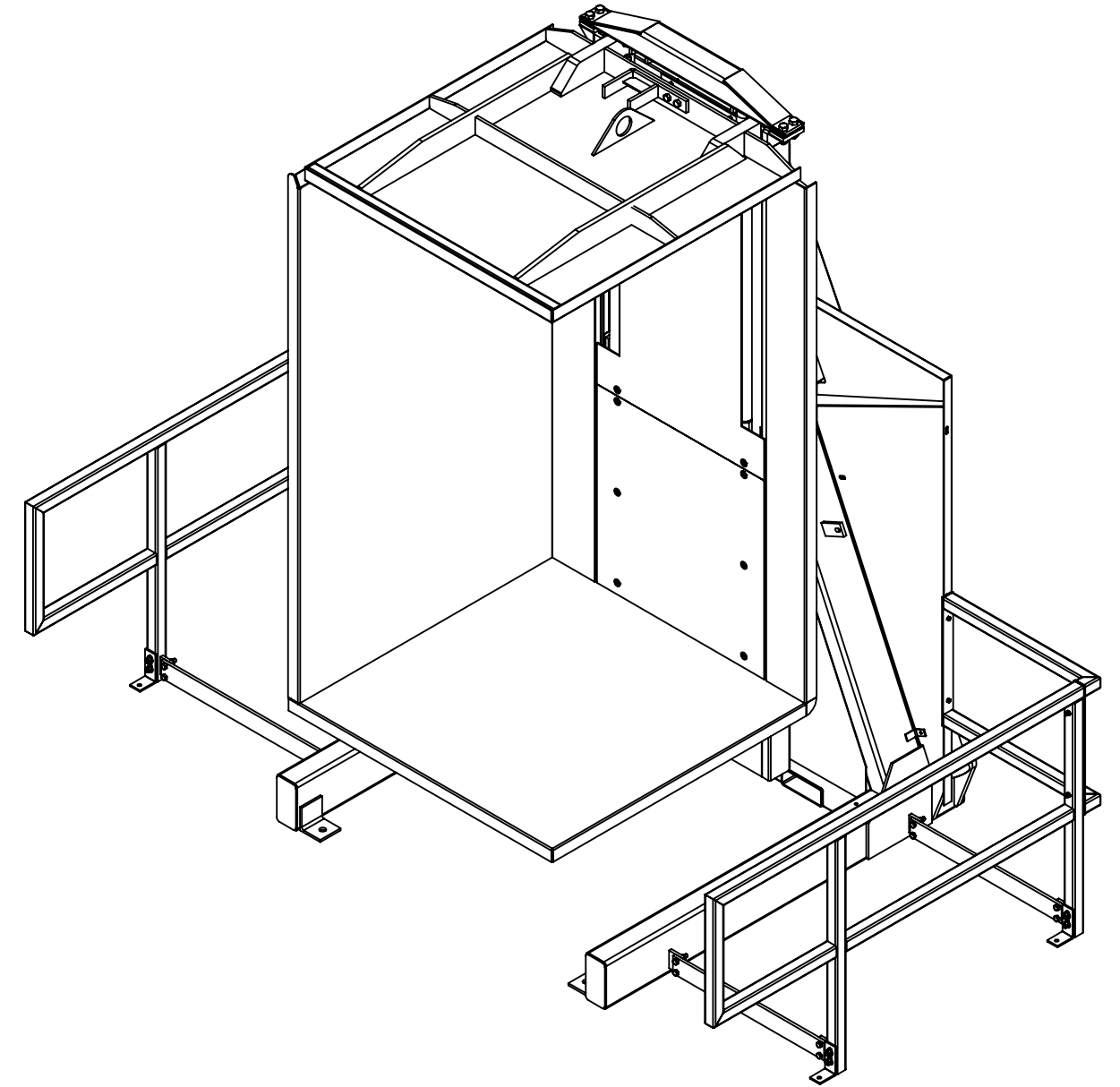


Ø 1" Hole for
Machine Anchor
(4 Places)

Ø 5/8" Hole for
Guarding Anchor
(6 Places)



SECTION A-A
SCALE 1 : 24

Approval Print
Cherry's Industrial Equipment

Date Sent: _____

- ☐ APPROVED. PROCEED WITH FABRICATION
- ☐ APPROVED AS NOTED. PROCEED WITH FABRICATION. FURNISH REVISED PRINTS
- ☐ REVISE AS NOTED. RE-SUBMIT FOR APPROVAL. DO NOT FABRICATE.

Tolerances Unless Otherwise Specified

Decimals: 0.X = +/- 0.1
0.XX = +/- 0.01
0.XXX = +/- 0.005

Angle: +/- 1

Fraction: +/- 1/4

This drawing is confidential and is
supplied on the express condition
that it is not copied or
communicated to other persons
or companies

Third Angle Projection

Do not scale - If in doubt, ask
Please inform if modifications
are made during manufacture



All Units in Inches

#	Date	By
Drawing Revisions		

SC-90P Pallet Inverter
Rail Guarding Option



600 Morse Ave.
Elk Grove Village, IL 60007

Date:	10/04/2013
Scale:	DNS
Drawn By:	RJL
Checked By:	RJL
Material:	PCS
Weight:	4150 lbs. Aprx.
Drawing #:	SC-90P-GR_01a

8 7 6 5 4 3 2 1

F

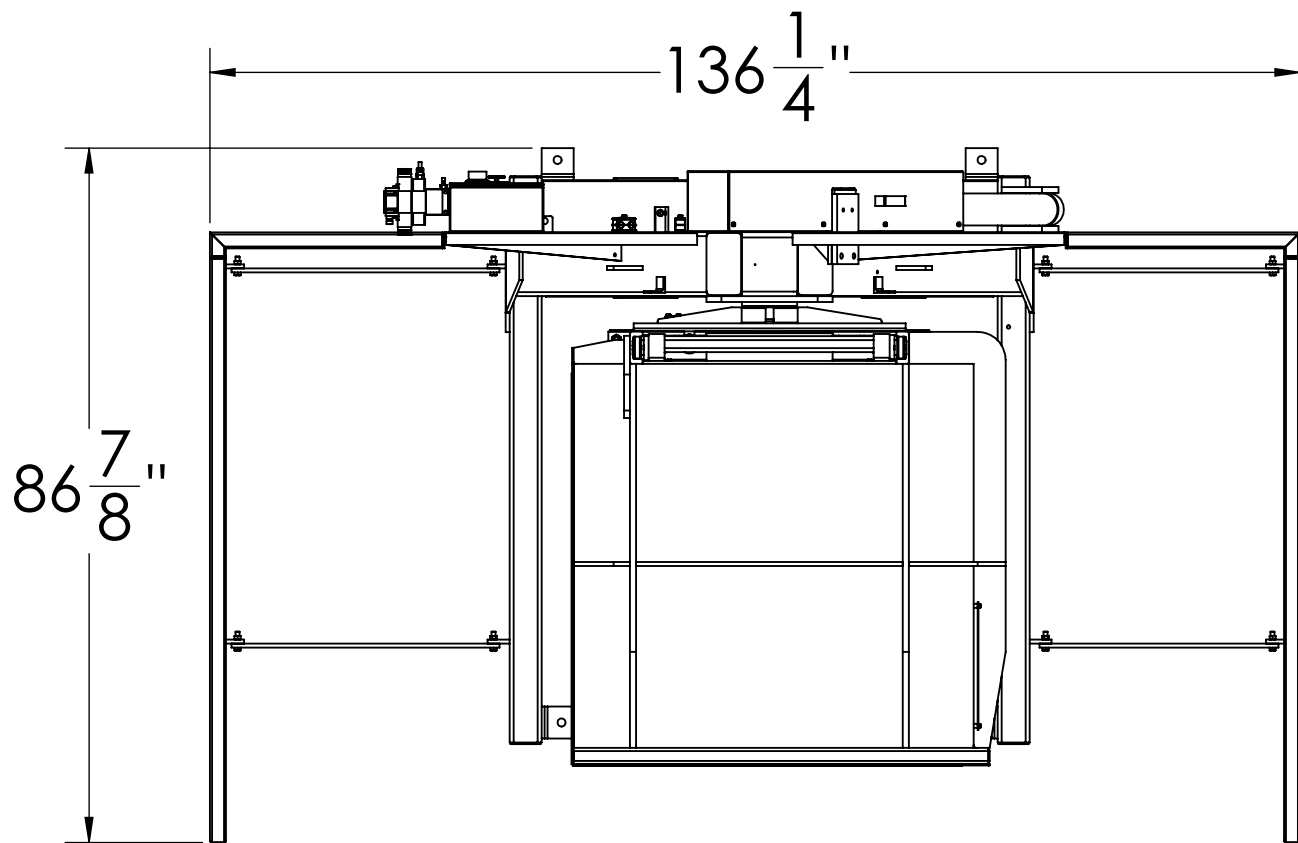
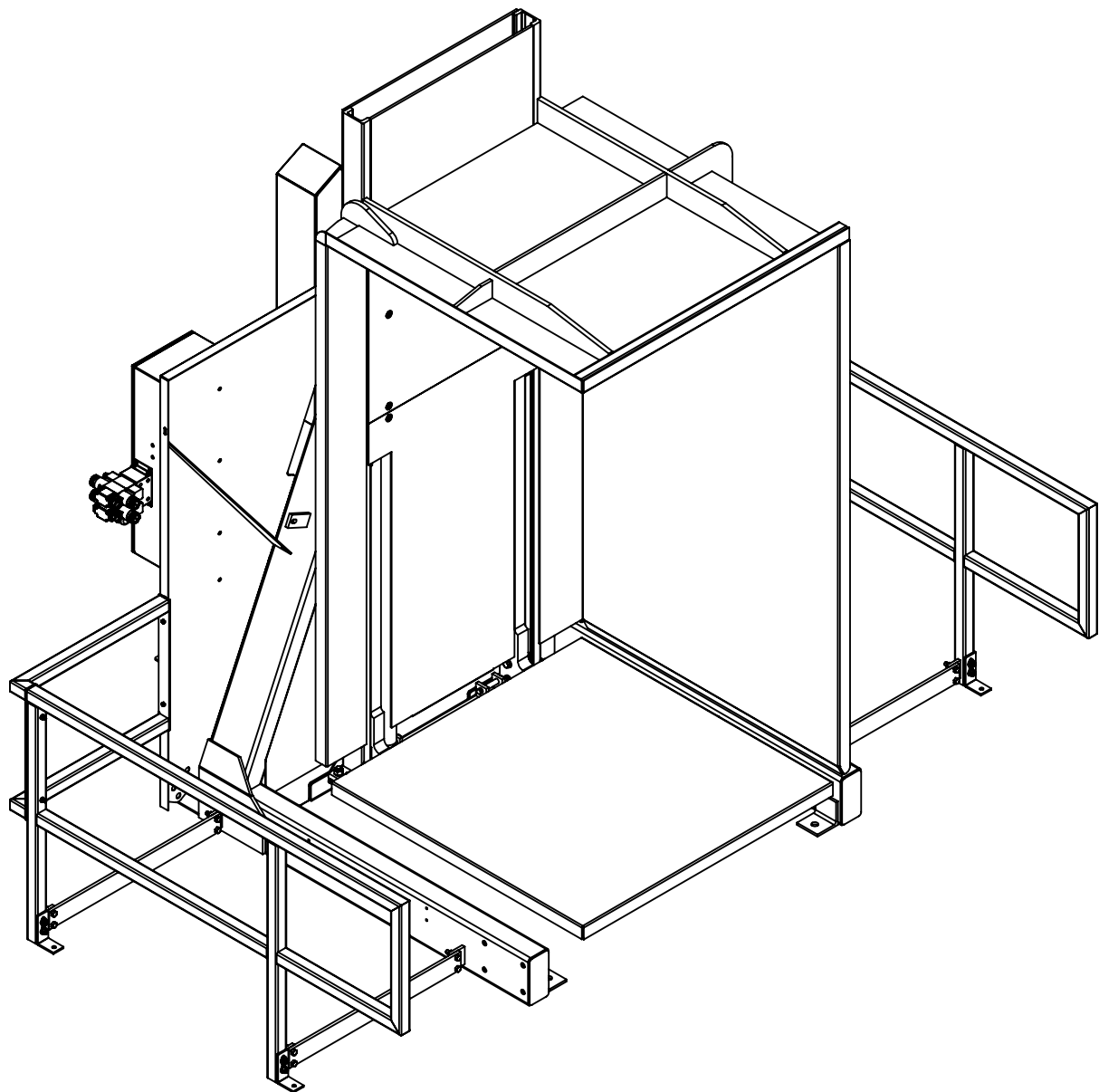
E

D

C

B

A



F

E

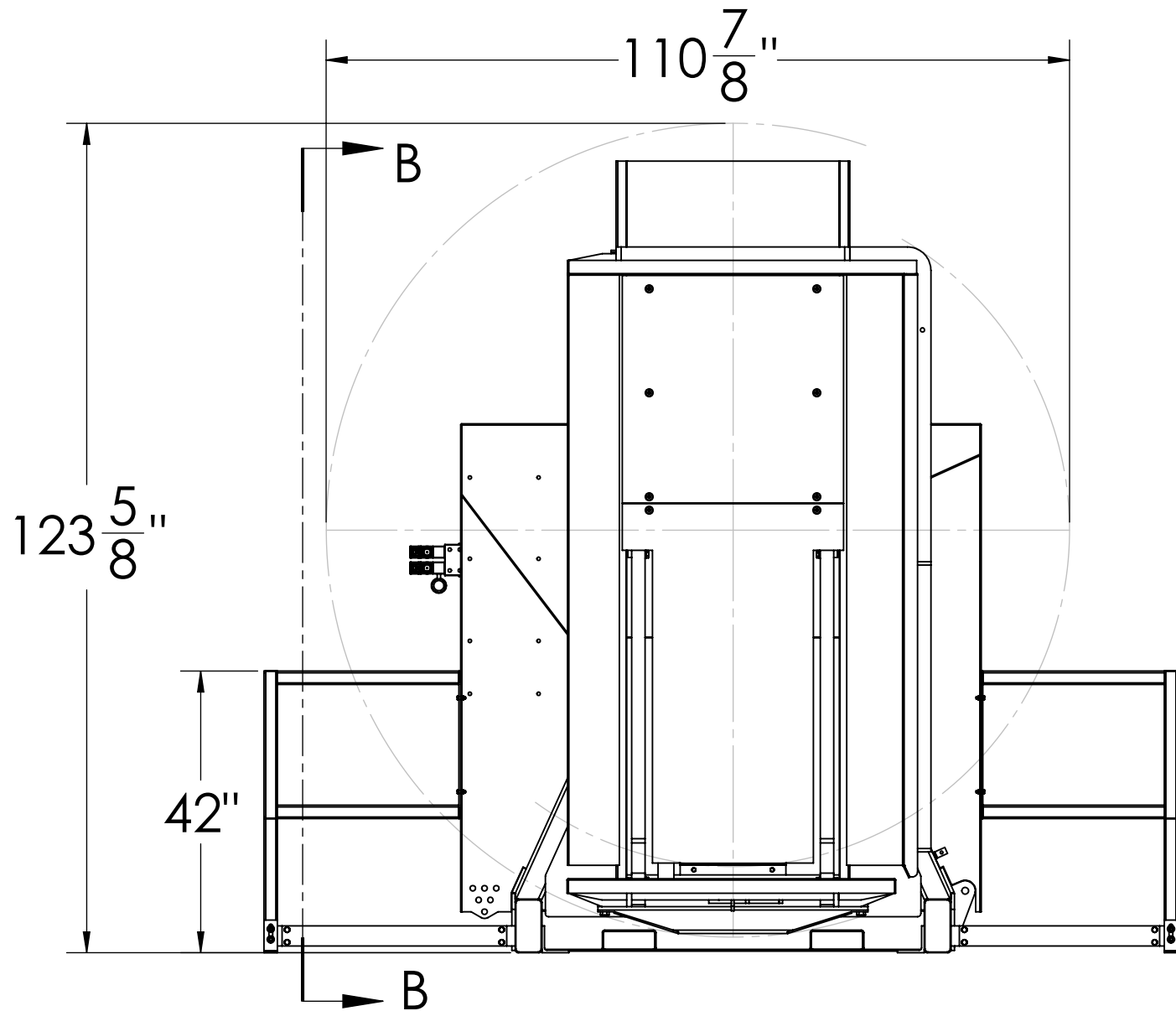
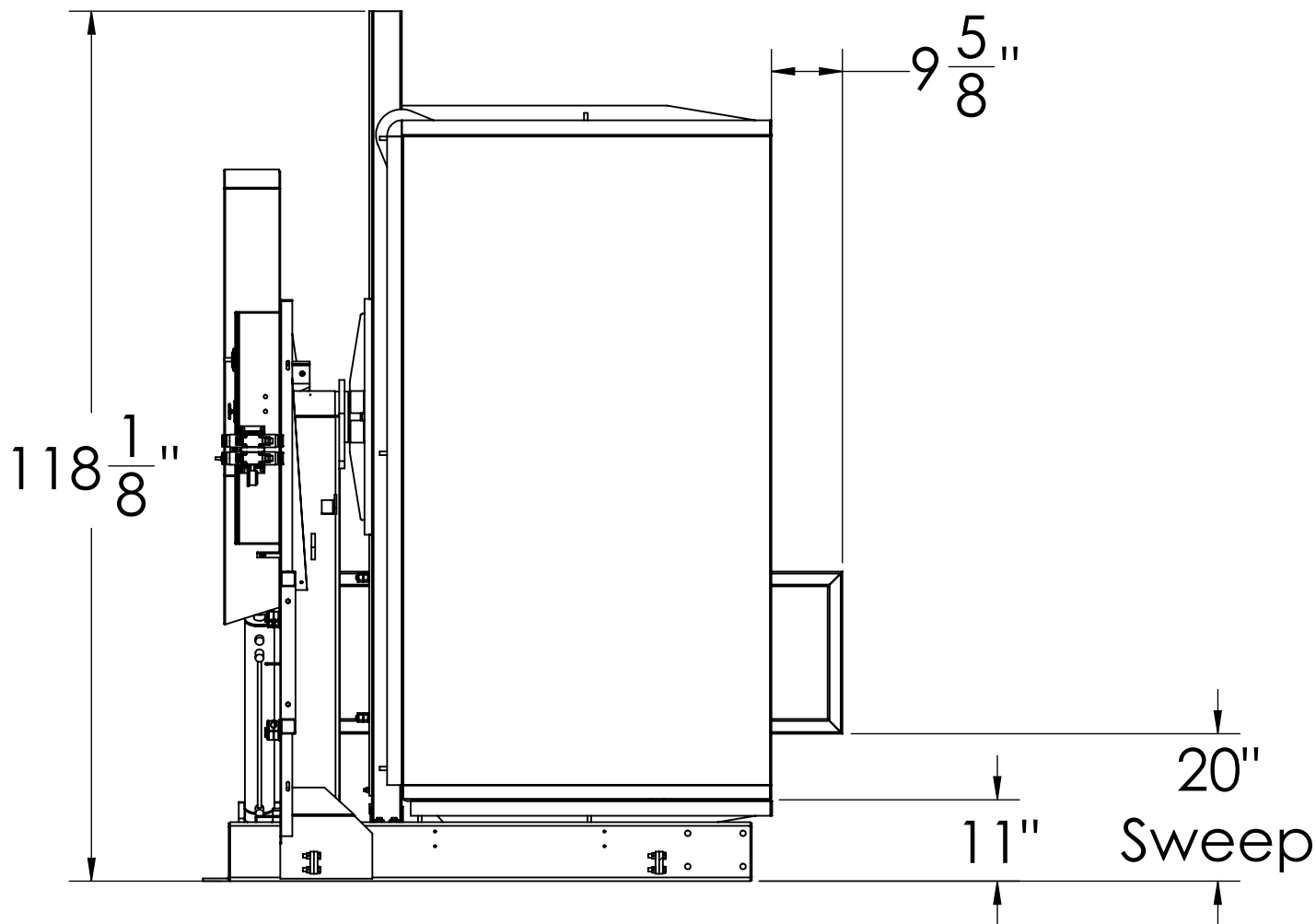
D

C

B

A

SECTION B-B
SCALE 1 : 24



Approval Print
Cherry's Industrial Equipment

Date Sent: _____

- ☐ APPROVED. PROCEED WITH FABRICATION
- ☐ APPROVED AS NOTED. PROCEED WITH FABRICATION. FURNISH REVISED PRINTS
- ☐ REVISE AS NOTED. RE-SUBMIT FOR APPROVAL. DO NOT FABRICATE.

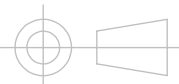
Tolerances Unless Otherwise Specified

Decimals: 0.X = +/- 0.1 Angle: +/- 1
 0.XX = +/- 0.01 Fraction: +/- 1/4
 0.XXX = +/- 0.005

This drawing is confidential and is supplied on the express condition that it is not copied or communicated to other persons or companies

Do not scale - If in doubt, ask
Please inform if modifications are made during manufacture

Third Angle Projection



All Units in Inches

#	Date	By
Drawing Revisions		

SC-90P Pallet Inverter
Rail Guarding Option



600 Morse Ave.
Elk Grove Village, IL 60007

Date:	10/04/2013
Scale:	DNS
Drawn By:	RJL
Checked By:	RJL
Material:	PCS
Weight:	4150 lbs. Aprx.
Drawing #:	SC-90P-GR_01a

8

7

6

5

4

3

2

1