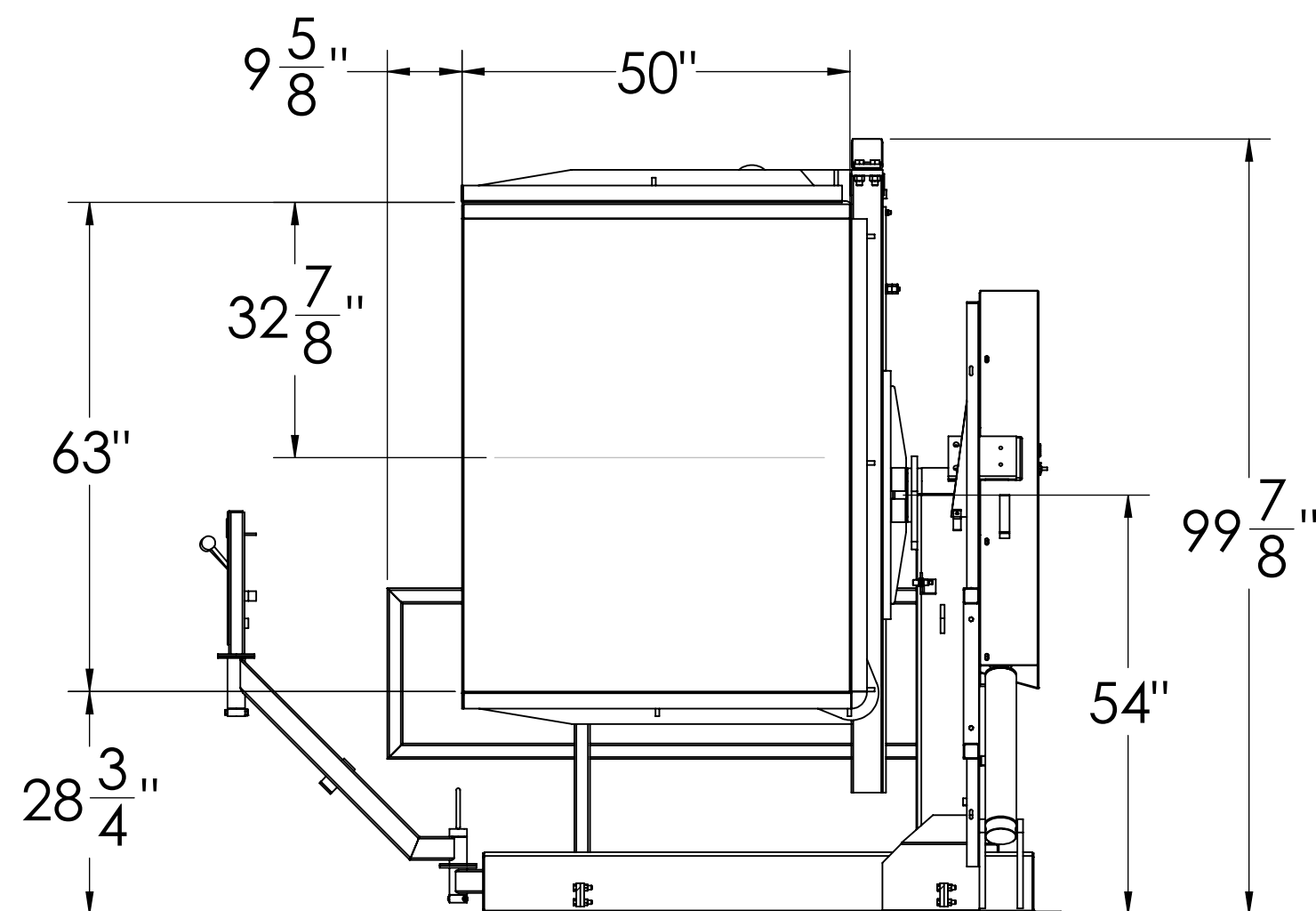
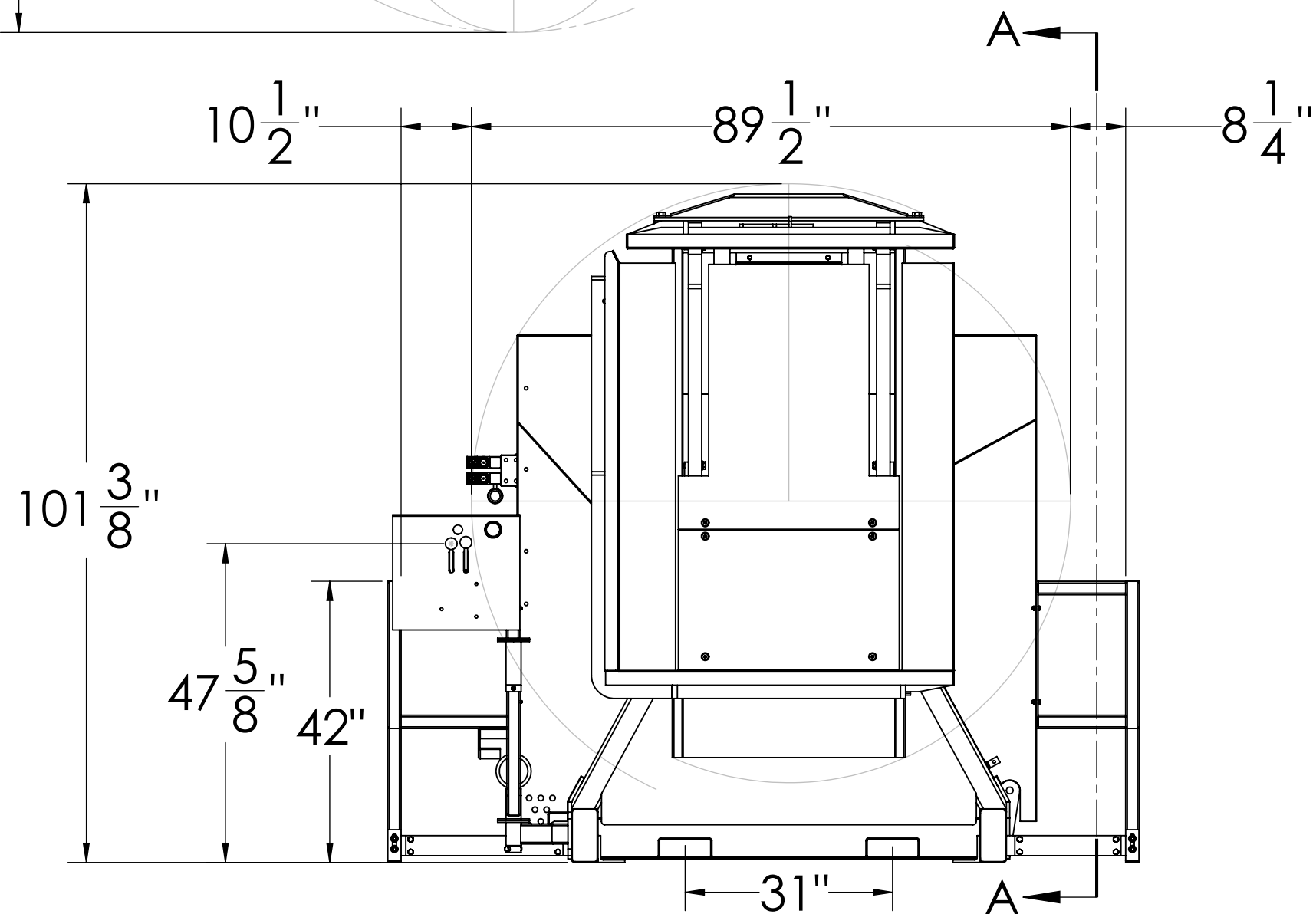
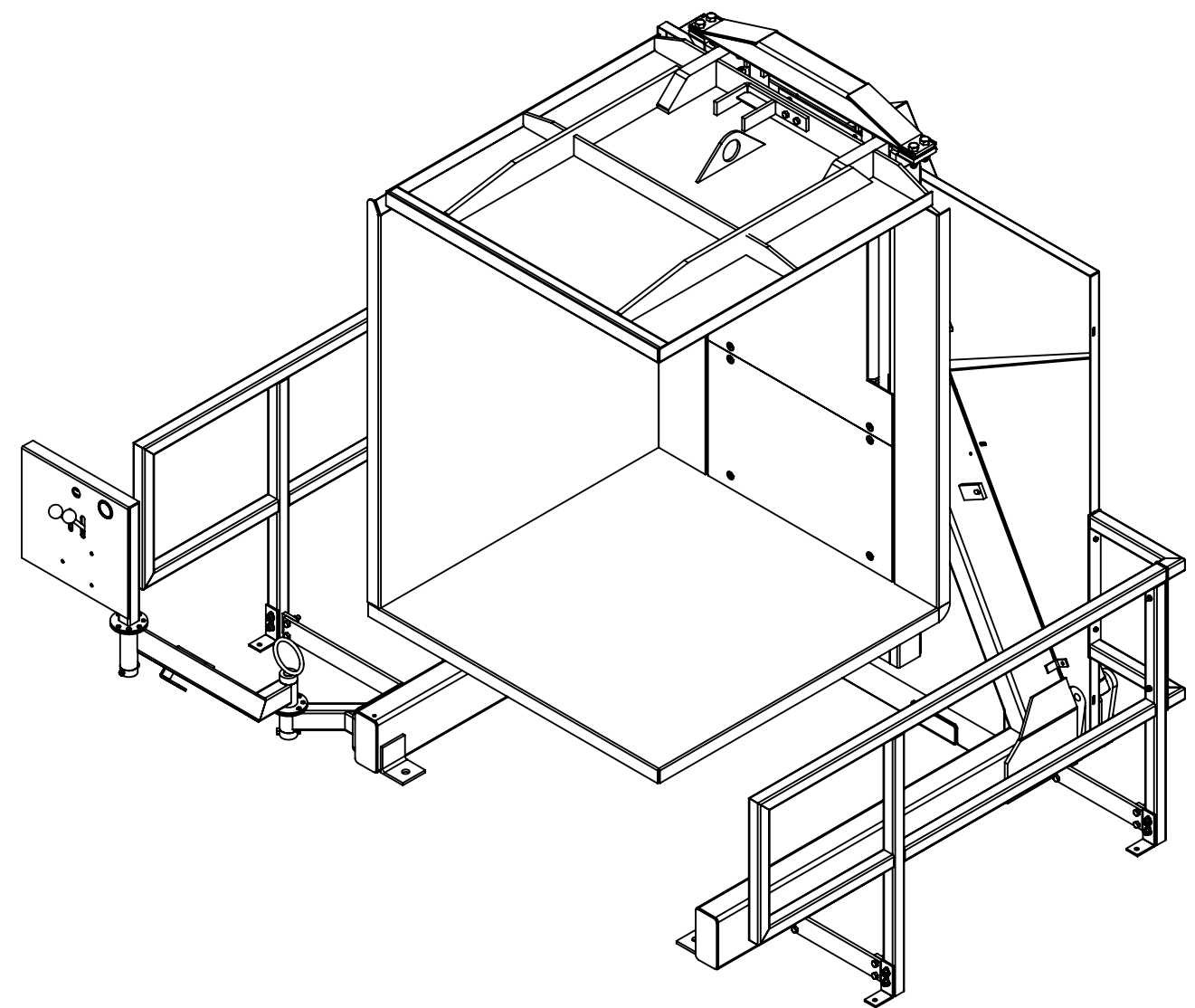


Ø 1" Hole for
Machine Anchor
(4 Places)

Ø 5/8" Hole for
Guarding Anchor
(4 Places)



SECTION A-A
SCALE 1 : 22

Approval Print
Cherry's Industrial Equipment

Date Sent: _____

- ☐ APPROVED. PROCEED WITH FABRICATION
- ☐ APPROVED AS NOTED. PROCEED WITH FABRICATION. FURNISH REVISED PRINTS
- ☐ REVISE AS NOTED. RE-SUBMIT FOR APPROVAL. DO NOT FABRICATE.

Tolerances Unless Otherwise Specified

Decimals: 0.X = +/- 0.1
0.XX = +/- 0.01
0.XXX = +/- 0.005

Angle: +/- 1

Fraction: +/- 1/4

This drawing is confidential and is supplied on the express condition that it is not copied or communicated to other persons or companies

Do not scale - If in doubt, ask
Please inform if modifications are made during manufacture

Third Angle Projection



All Units in Inches

#	Date	By
Drawing Revisions		

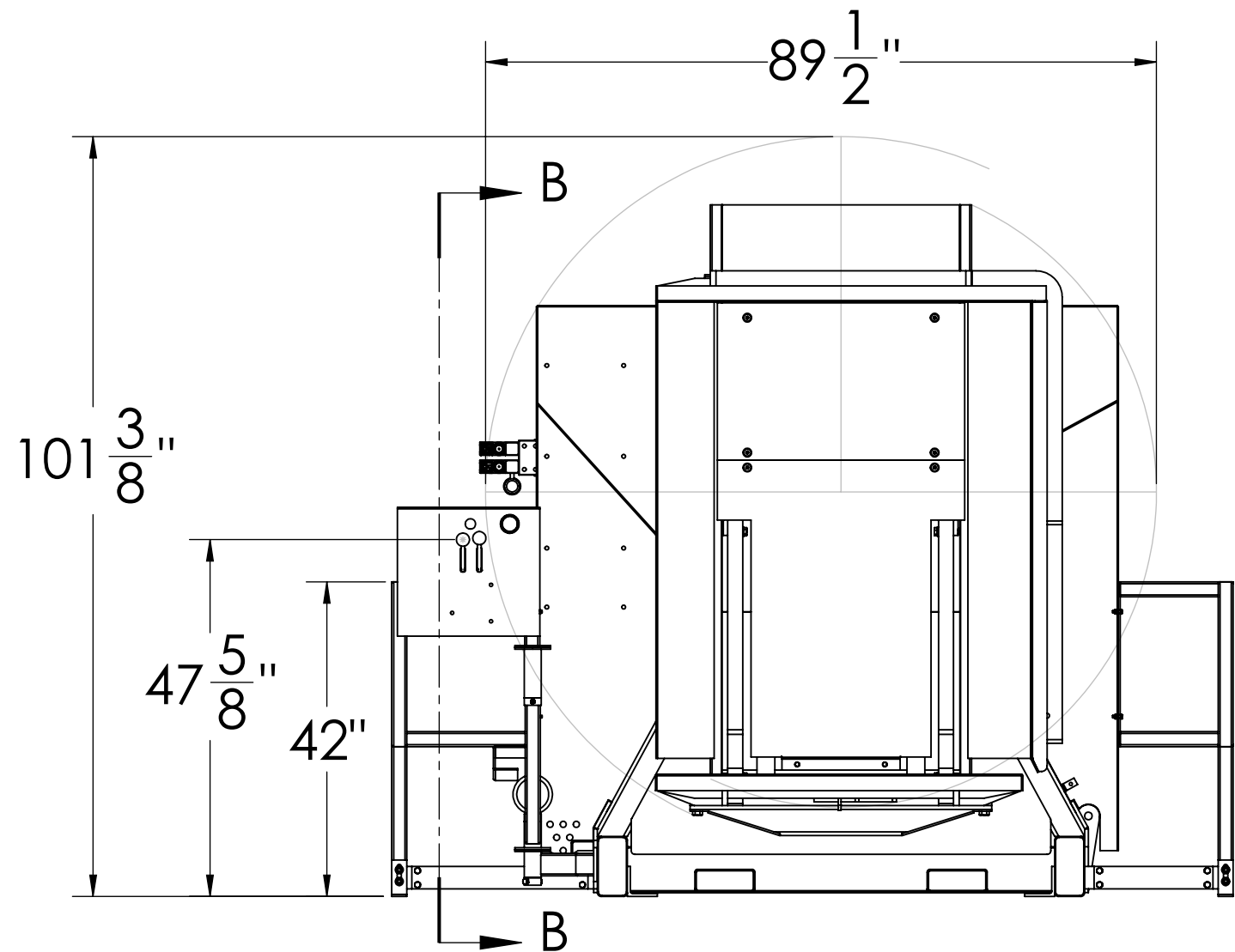
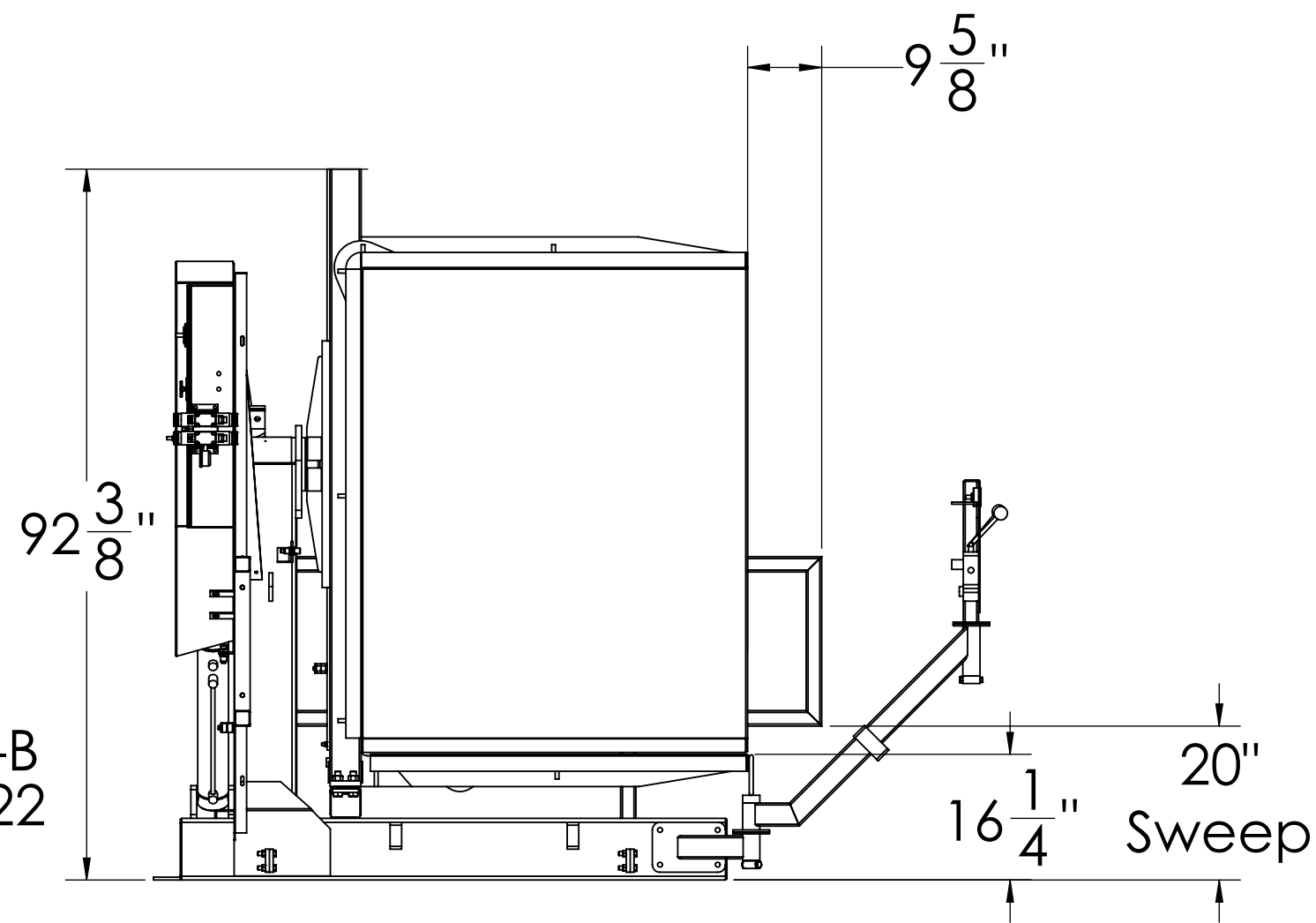
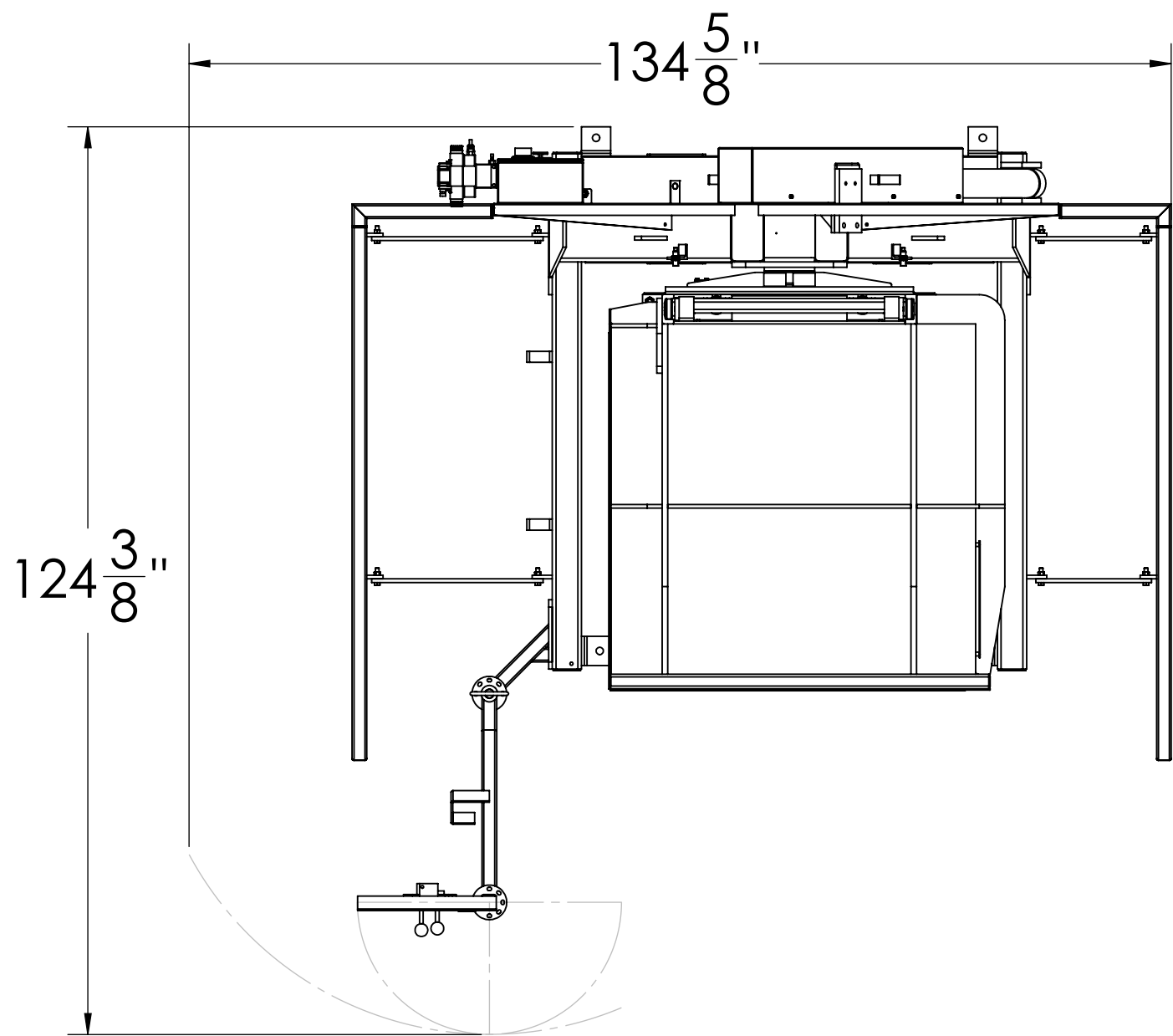
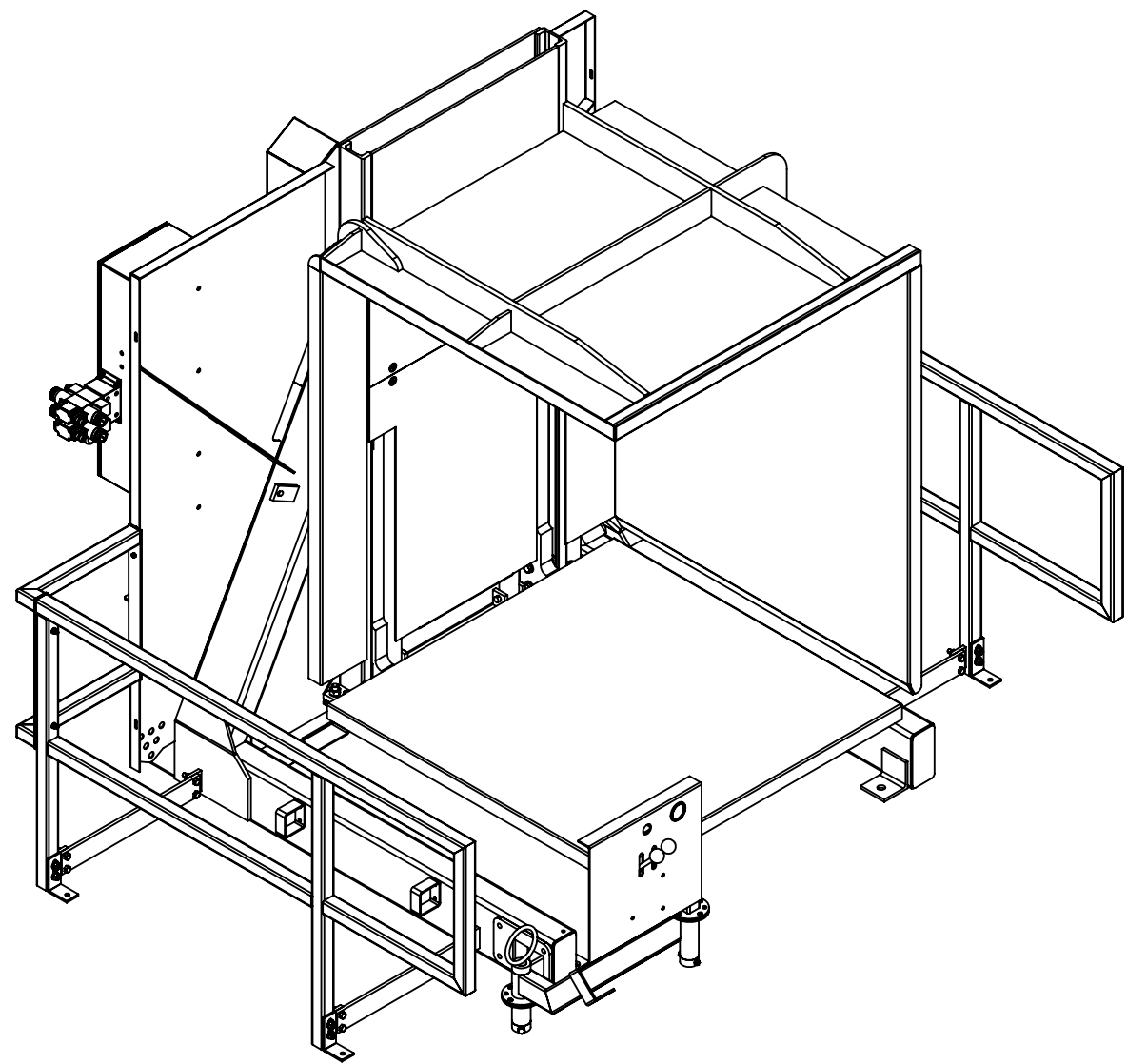
SC-63L Pallet Inverter
Rail Guarding Option



600 Morse Ave.
Elk Grove Village, IL 60007

Date:	08/30/2013
Scale:	DNS
Drawn By:	RJL
Checked By:	RJL
Material:	PCS
Weight:	3500 lbs. Aprx.
Drawing #:	SC-63L-GR_01a

F
E
D
C
B
A



SECTION B-B
SCALE 1 : 22

Approval Print
Cherry's Industrial Equipment

Date Sent: _____

- ☐ APPROVED. PROCEED WITH FABRICATION
- ☐ APPROVED AS NOTED. PROCEED WITH FABRICATION. FURNISH REVISED PRINTS
- ☐ REVISE AS NOTED. RE-SUBMIT FOR APPROVAL. DO NOT FABRICATE.

Tolerances Unless Otherwise Specified

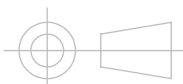
Decimals: 0.X = +/- 0.1
0.XX = +/- 0.01
0.XXX = +/- 0.005

Angle: +/- 1
Fraction: +/- 1/4

This drawing is confidential and is supplied on the express condition that it is not copied or communicated to other persons or companies

Do not scale - If in doubt, ask
Please inform if modifications are made during manufacture

Third Angle Projection



All Units in Inches

#	Date	By
Drawing Revisions		

SC-63L Pallet Inverter
Rail Guarding Option



600 Morse Ave.
Elk Grove Village, IL 60007

Date:	08/30/2013
Scale:	DNS
Drawn By:	RJL
Checked By:	RJL
Material:	PCS
Weight:	3500 lbs. Aprx.
Drawing #:	SC-63L-GR_01a

F
E
D
C
B
A