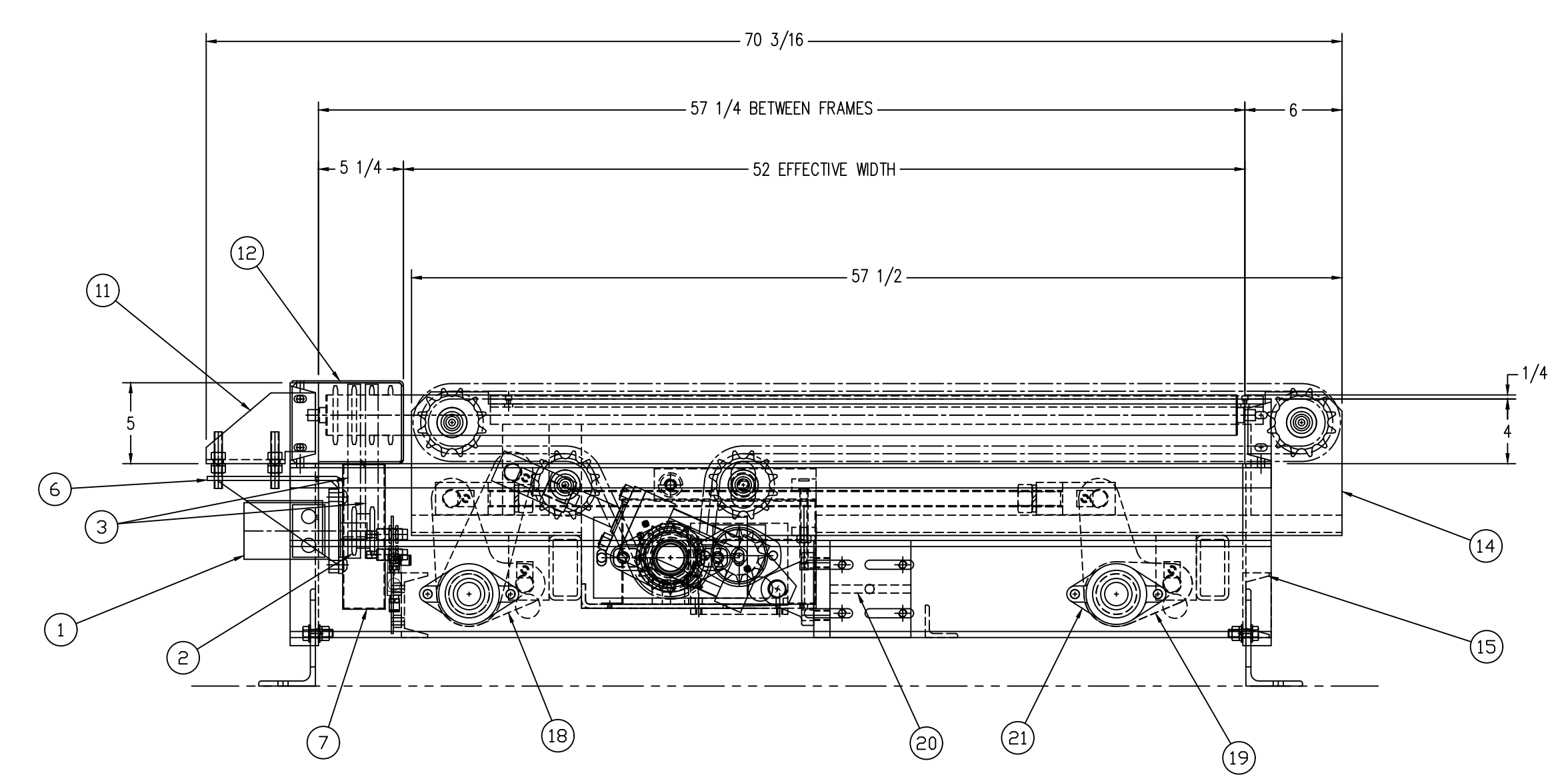
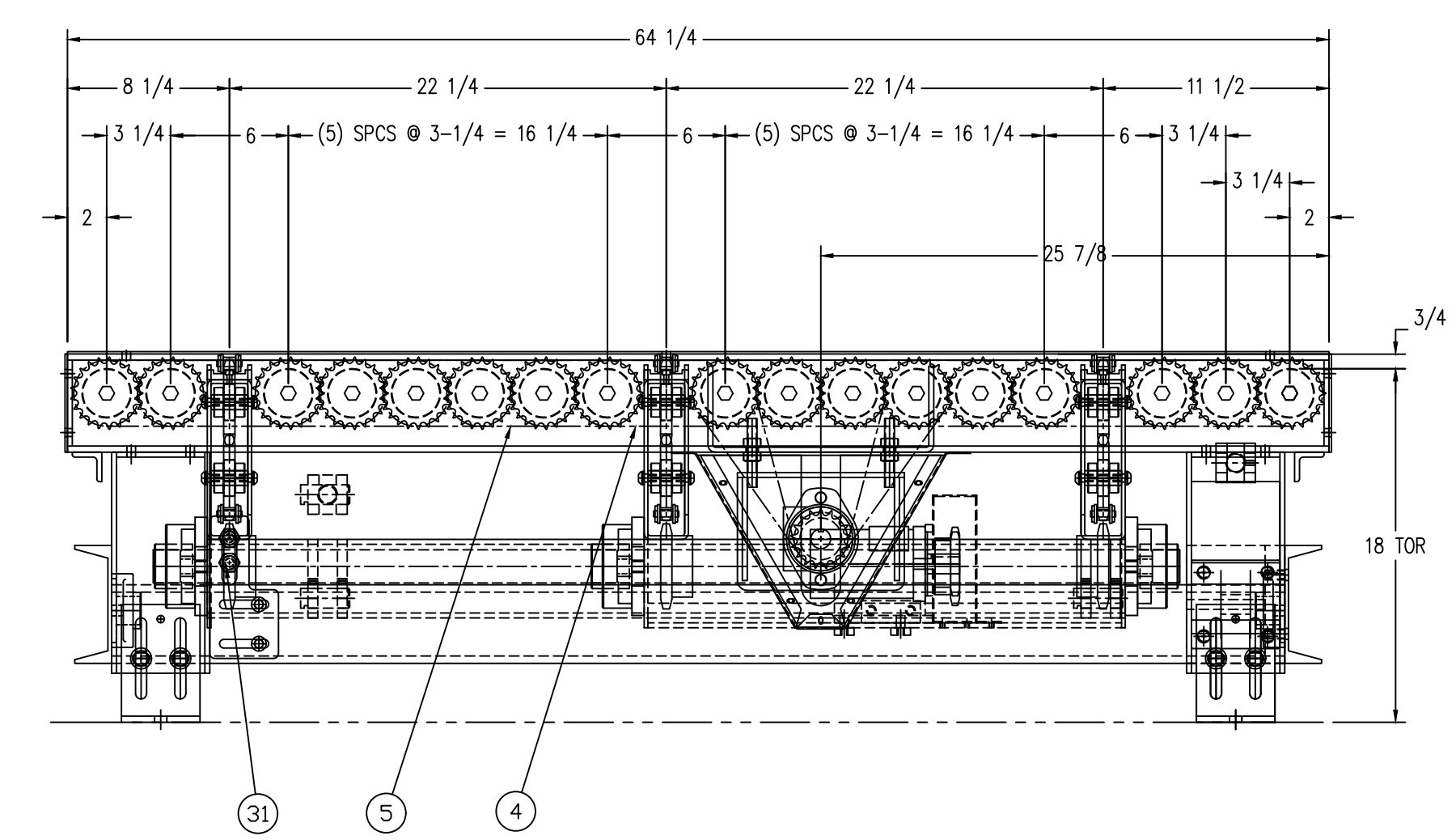
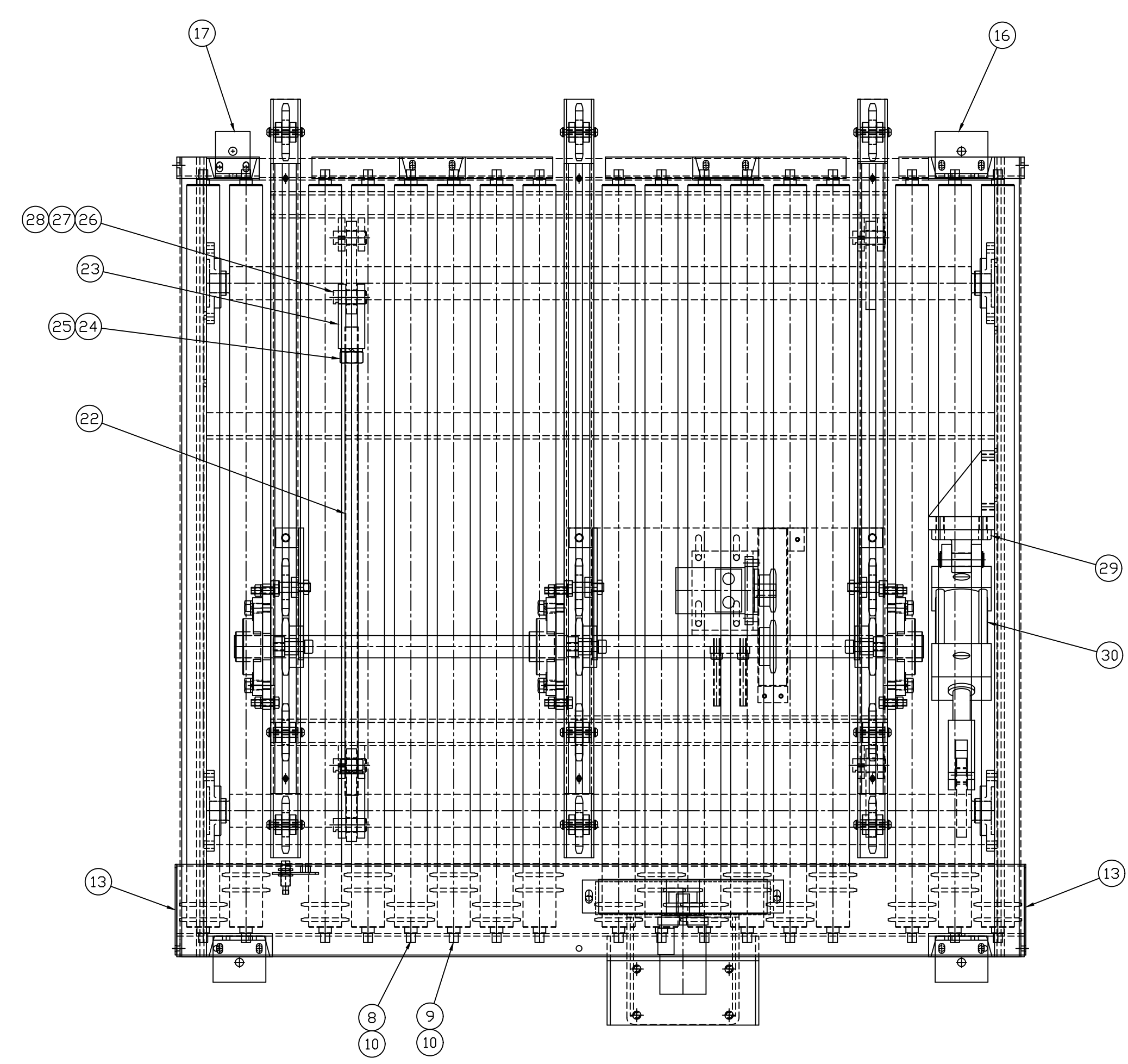


BILL OF MATERIALS

PART NUMBER: 45696-A01		QTY: 1		
ITEM	PART#	QTY	MATERIAL	LENGTH
1		1	101-2355-009 CHAR-LYNN HYD MOTOR, H SERIES, 2.2 IN CUBED DISPLACEMENT, 1" OUT PU	
2		1	40DS17H X 1" BORE SPRKT [KW + [2]SS]	
3		2	RC40 X 32" CHAIN (64P, INCL MSTR)	
4		6	RC40 X 29" CHAIN (58P, INCL MSTR)	
5		7	RC40 X 23-1/2" CHAIN (47P, MSTR+1/2-LNK)	
6	45696-DP1	1	HYD MOTOR MOUNT CDLR, CHAR-LYNN H SERIES	
7		1	DG109 DRIVE GUARD - STANDARD POWDER COAT SAFETY YELLOW	
8	25114PO-57.25	9	2-1/2 DIA X 11GA GALV DRIVEN ROLLER, FR BRGS, 40A21-IN, PINNED	
9	25114PR-57.25	8	2-1/2 DIA X 11GA GALV DRIVEN ROLLER, FR BRGS, 40A21-OUT, PINNED	
10	H69-57.25	17	11/16 HEX AXLE-PINNED, 57-1/4" BF	
11	45696-FRM01	1	TFT251140-3.25-35 CDLR FRAME WELDMENT	
12	P45696-SG01	1	10GA SCALLOPED GRD 64-1/4" LG	
13		2	S-267 END COVER - 5 X 6-7/8 X 1/8 POWDERCOAT SAFETY YELLOW	
14	45696-TA1	1	TRANSFER ASSY, HYD MOTOR, 3S, 22-1/4" CENTERS RC80, 1-11/16 DIA DRIVE SHAFT	
15	45696-BFRM1	1	BASEFRAME WELDMENT	
16		3	S-500 SUPPORT FOOT, STANDARD	
17	S-501	1	STANDARD SUPPORT FOOT 1-3/4" PLUS/MINUS ADJUSTMENT, LIGHT DUTY	
18	45696-PR1	1	PIVOT ROLLER HEAD 59-1/4" OAL	
19	45696-PR2	1	PIVOT ROLLER TAIL 59-1/4" OAL	
20	36419-CM1	1	CYLINDER MOUNT BRACKET	
21		4	SBFTN207-23 2-BOLT FLG BRG 1-7/16 BORE	
22		1	1-14 THREADED ROD X 12 ZINC #47276 *INV*	35-1/4"
23		3	S-373 CLEVIS, STD, 2X2X4-7/8 CRS, BLK OX	
24		2	1-14 HEX NUT # 36170	
25		2	1 LOCK WASHER # 3636	
26		7	S-374 CLEVIS AXLE, STANDARD	
27		7	16DU12 GARLOCK BUSHING (16TU12)	
28		7	S-375 CLEVIS AXLE KEEPER-1 X 1 X 1/8	
29		1	EB-1000 EYE BRACKET - 1 INCH	
30		1	3.25CBB-2HCT14AC-2.875 PARKER HYD CYLINDER, 3.25 BORE, 2.875 STROKE, REAR PIVOT	
31	S-448-2	1	STD TRANSFER PROX PKG, DOUBLE, 24VDC	

NOTES:

- 1.) QUANTITY TO BE MANUFACTURED: (1) AS SHOWN, TAG AS UNIT #C5/C6.
- 2.) CONVEYOR MOTOR: CHAR-LYNN HYDRAULIC MOTOR, 495 IN*LB TORQUE AT 1800PSI, 959 RPM AT 10 GPM
- 3.) CONVEYOR ROLLERS: 2-1/2 DIA, X 11GA, GALVANIZED TUBE, 11/16" HEX AXLE PIN RETAINED, TWO #40A21 SPROCKETS WELDED TO TUBE, HEAVY DUTY FR-SERIES GREASE PACKED BALL BEARINGS.
- 4.) ROLLER SPACING: 3-1/4" CENTERS
- 5.) CONVEYOR SPEED: 30 F.P.M. AT 1 GPM AND 1400PSI
- 6.) FRAMES AND SUPPORTS CONSTRUCTED OF WELDED STRUCTURAL STEEL.
- 7.) TRANSFER MOTOR: CHAR-LYNN HYDRAULIC MOTOR, 1640 IN*LB TORQUE AT 1800PSI, 358 RPM AT 12 GPM
- 8.) TRANSFER CHAINS: 3 STRANDS OF ANSI RC80 ROLLER CHAIN RIDING ON UHMW CHAIN GUIDE WEAR STRIPS ON 22-1/4" CENTERS AS SHOWN.
- 9.) BEARINGS: SST TWO BOLT SET SCREW TYPE FLANGE UNITS.
- 10.) TRANSFER SPEED: 30 F.P.M.
- 11.) TRANSFER RAILS CONSTRUCTED OF 7 GA. FORMED STEEL.
- 12.) ACTUATION: 4-POINT POSITIVE LEVER ARM LIFT ACTUATED BY A PARKER 2H SERIES HYDRAULIC CYLINDER.
- 13.) ALL PIVOT POINTS TO HAVE GARLOCK DU BUSHINGS.
- 16.) ALBA MFG. TO PROVIDE AND MOUNT TWO 24VDC PNP PROXIMITY SWITCHES (EFFECTOR #107101) FOR SENSING TRANSFER RAISED AND LOWERED WITH 2 METER LONG QUICK DISCONNECT CABLE (MENCOM #MDC-4FP-2M).
- 18.) ALL OTHER ELECTRICAL, CONTROLS, SENSORS, DEVICES, CABLES, CABLE WAYS, CONNECTORS, WIRING AND JUNCTION BOXES BY CUSTOMER.
- 19.) ALL OTHER HYDRAULIC CONTROLS, SENSORS, DEVICES, MANIFOLDS, VALVES, CONNECTORS, FLOW CONTROLS AND POWER UNITS BY CUSTOMER
- 20.) HYDRAULIC PRESSURE: 1800 (CONTINUOUS) TO 2400 P.S.I. (INTERMITTENT) MAXIMUM.
- 21.) ALL SUPPORT FEET TO BE PINNED OR WELDED BY CUSTOMER AT INSTALLATION AFTER EQUIPMENT HAS BEEN ALIGNED AND LEVELED.
- 22.) PRODUCT INFO: 40 X 48 GMA PALLETS, 2300LBS MAXIMUM
- 23.) PAINT: STEEL-IT EPOXY W/ SAFETY YELLOW SCALLOPED GUARDS.



THIS DRAWING, AND ALL INFORMATION ON IT, IS THE PROPRIETARY PROPERTY OF ALBA MANUFACTURING, INC. AND IS LOANED ON THE CONDITION THAT IT IS NOT TO BE REPRODUCED, NOR IN ANY OTHER MANNER, DISCLOSED TO ANY THIRD PARTY WITHOUT THE WRITTEN CONSENT OF ALBA MANUFACTURING, INC. ALL RIGHTS OF DESIGN AND INVENTION ARE RESERVED. ALL PARTIES WITH CUSTODY OF THIS DOCUMENT ALSO ACCEPT THE FOREGOING CONDITIONS.

Alba MANUFACTURING, INC.
 8950 SEWARD ROAD
 FAIRFIELD OHIO 45011
 Phone: 866-252-2634
 Fax: 513-874-9476
 Web: albamfg.com

CHERRY'S INDUSTRIAL EQUIPMENT
 TFT251140-3.25-35 WIDE, RC-80 TRANSFER
 52" EW, HYDRAULIC DRIVES

APPROVED BY:	DRAWN BY: STAPLETON	JOB No: 45696
DATE:	DATE: 3/29/2017	DRAWING No: 45696-A01
REF:	SCALE: 1/8 (1-1/2:12)	REV: 1